
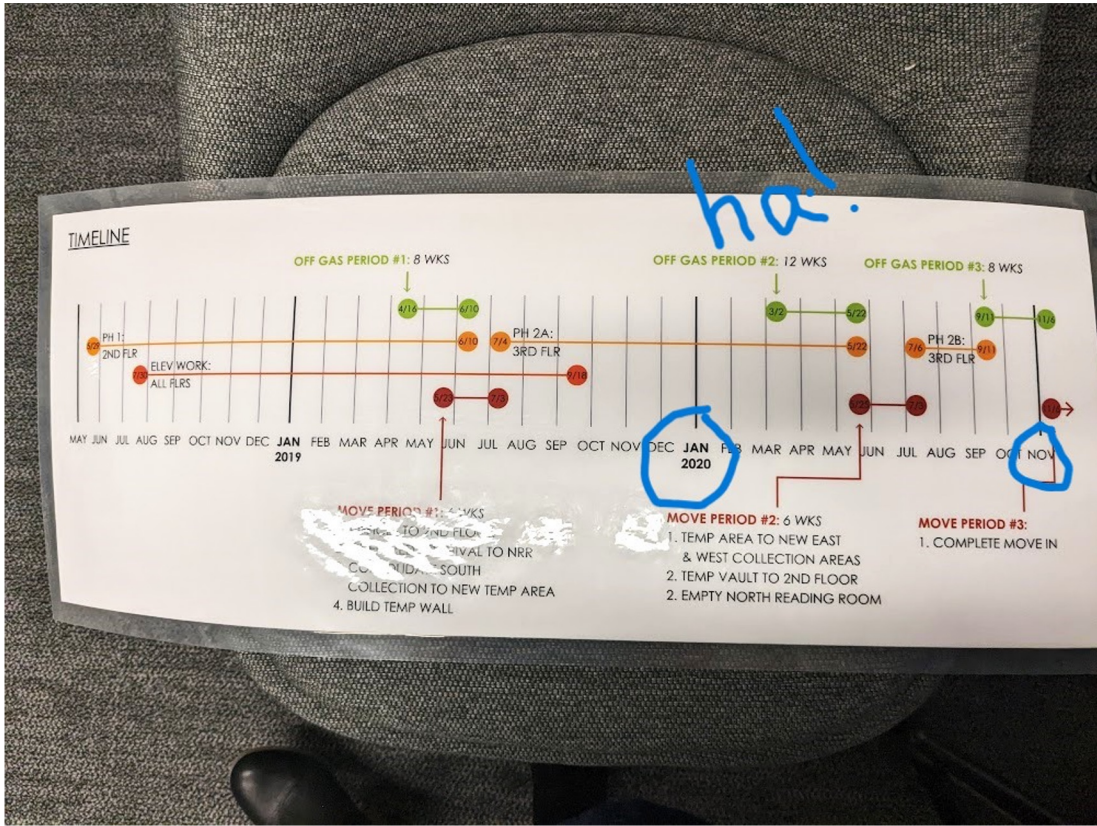


**A Complication of  
Circumstances:  
Renovation,  
Consolidation & the  
Articulation of Change -  
NYU Special Collections**





The Original Timeline...



What was... Original 3rd floor stacks

Image courtesy of NYU Special Collections



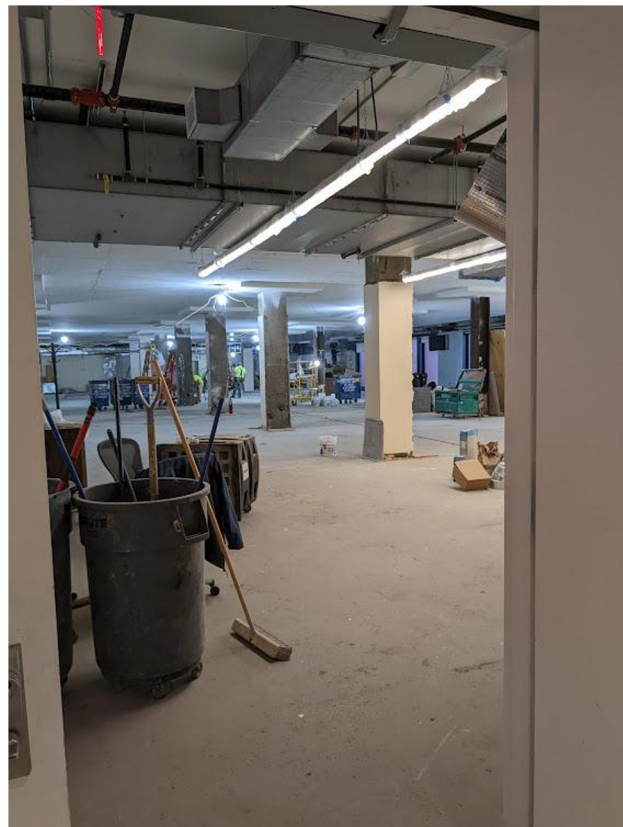
What was... Old Classroom, Fl. 3

Image courtesy of NYU Special Collections



SAVE

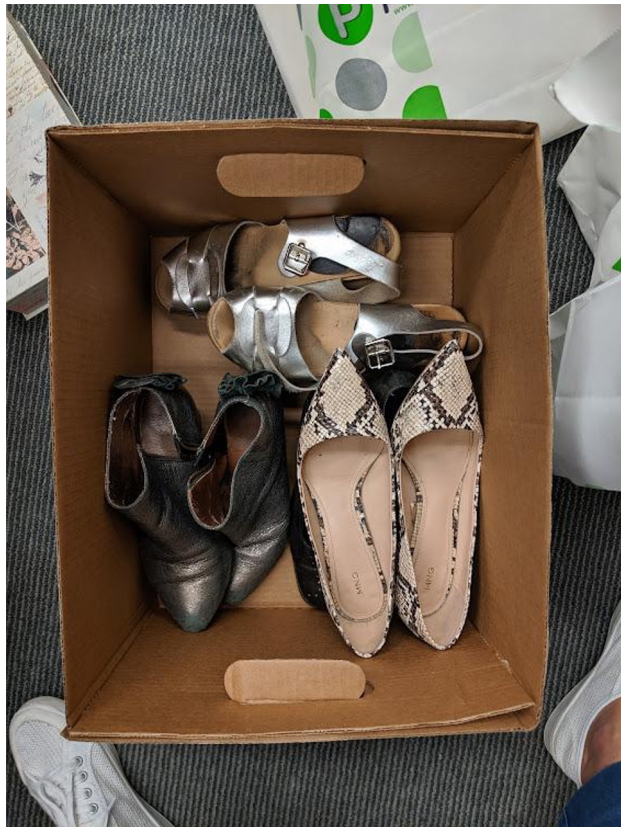
Image courtesy of NYU Special Collections



# Demolition

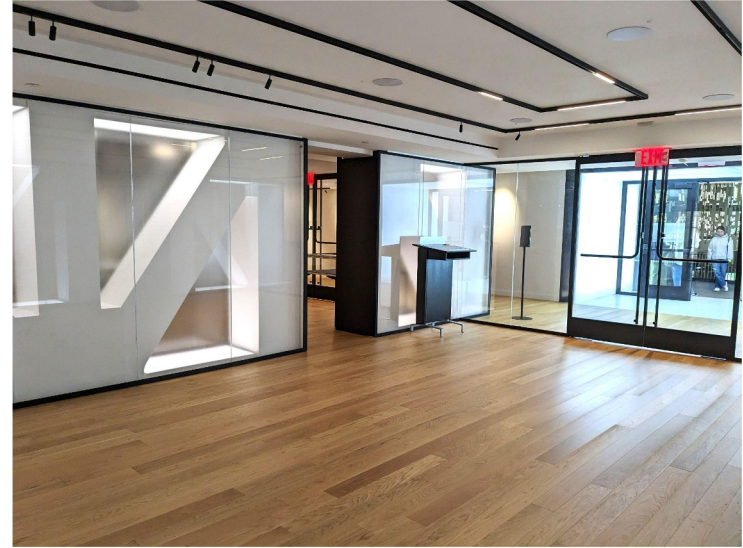
Collections

Image courtesy of NYU Special



What was... (My office)

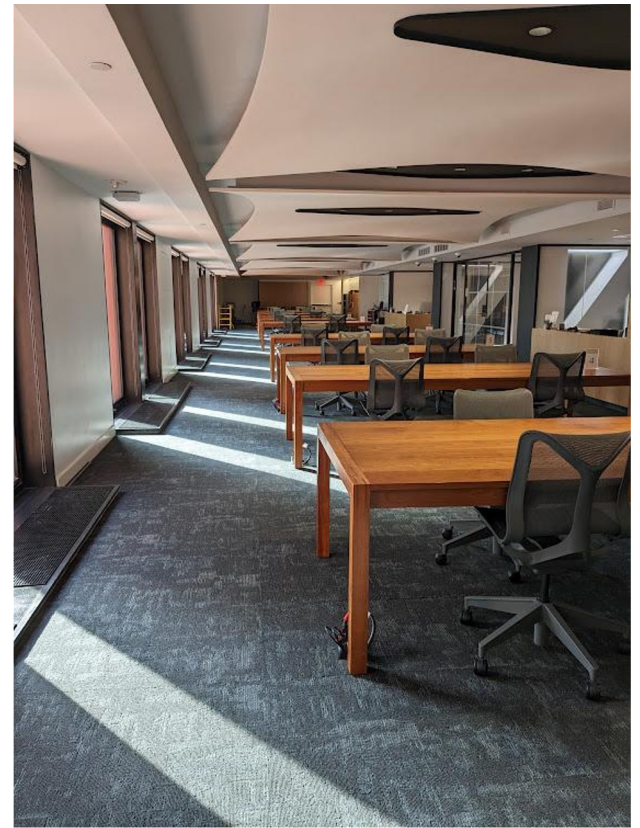
Image courtesy of NYU Special Collections



What is...Entryway

Image courtesy of NYU Special Collections





What is... Reading Room

Image courtesy of NYU Special Collections



What is...Classrooms

Image courtesy of NYU Special Collections



What is...Classroom layouts

Image courtesy of NYU Special Collections



What is... new book stacks

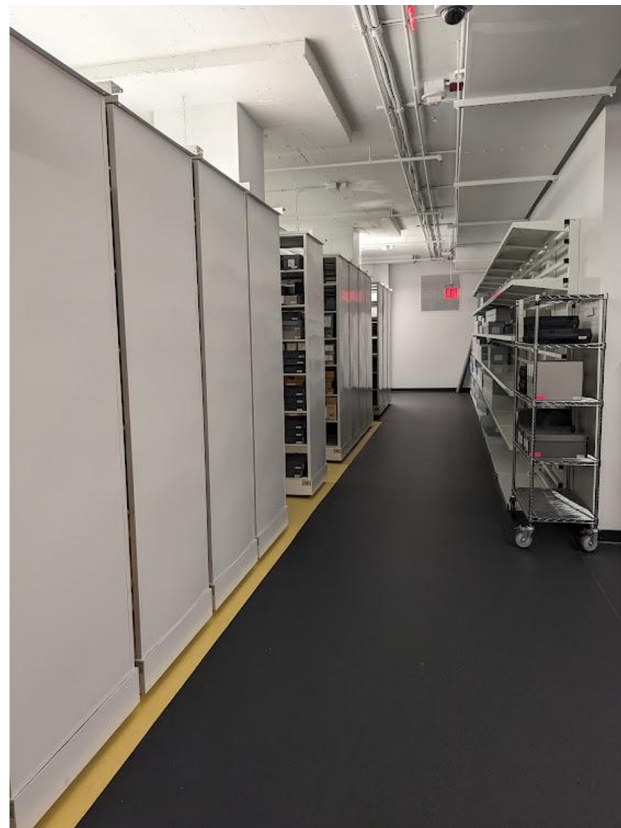
Image courtesy of NYU Special Collections



# What is... new book stacks

Collections

Image courtesy of NYU Special



What is...3rd Floor South

Image courtesy of NYU Special Collections



# What is... “Pop-Up” Space, east side

Collections

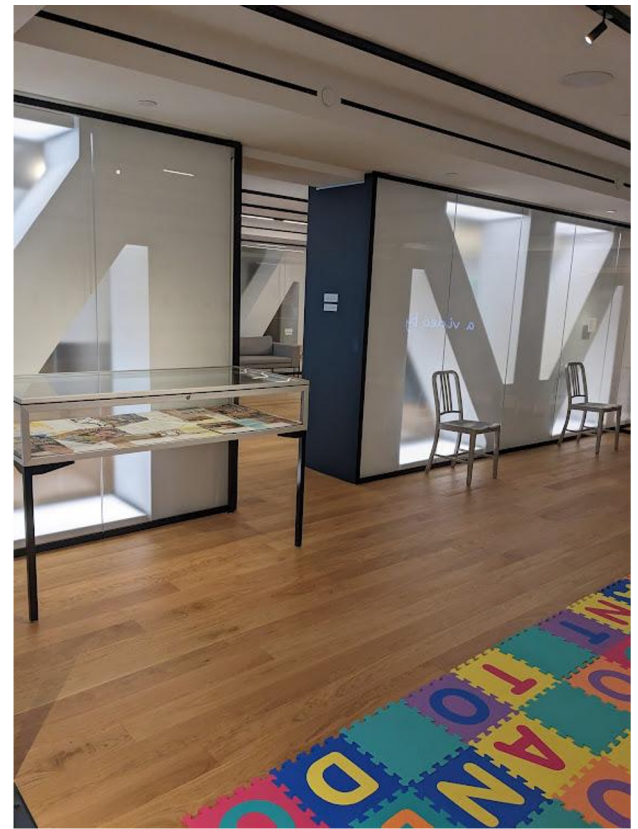
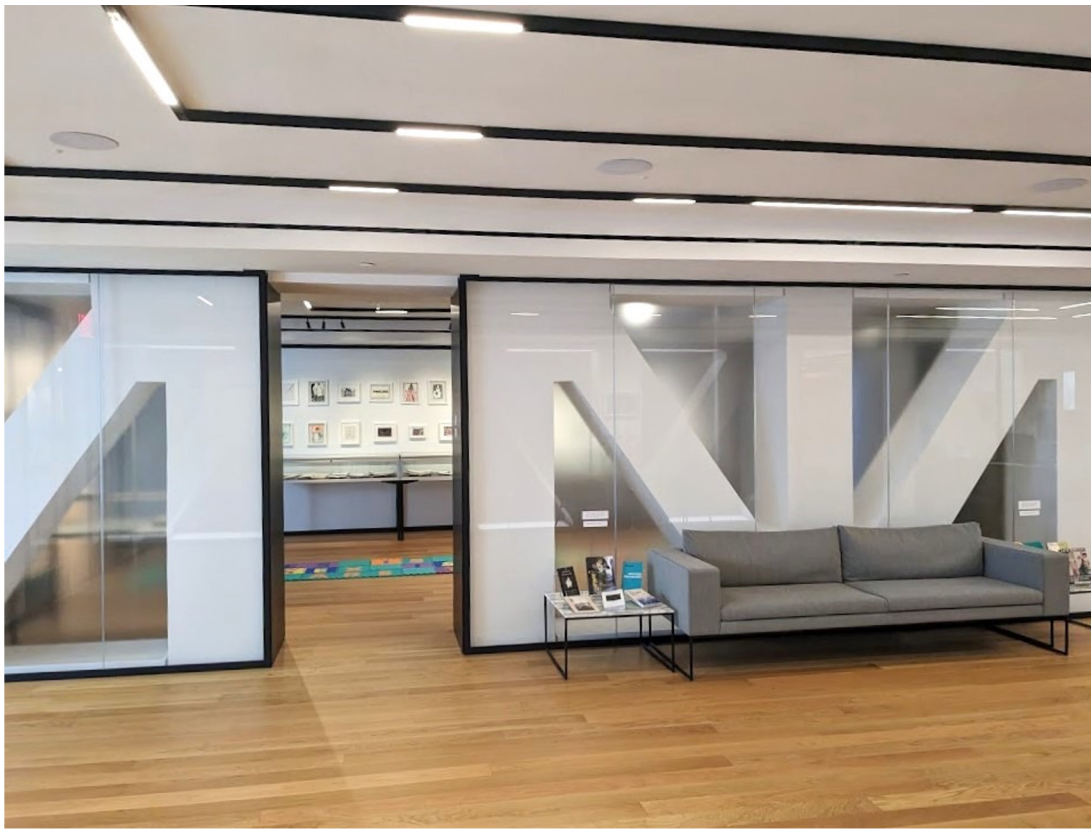
Image courtesy of NYU Special



What is... “Pop-Up” Space, west side

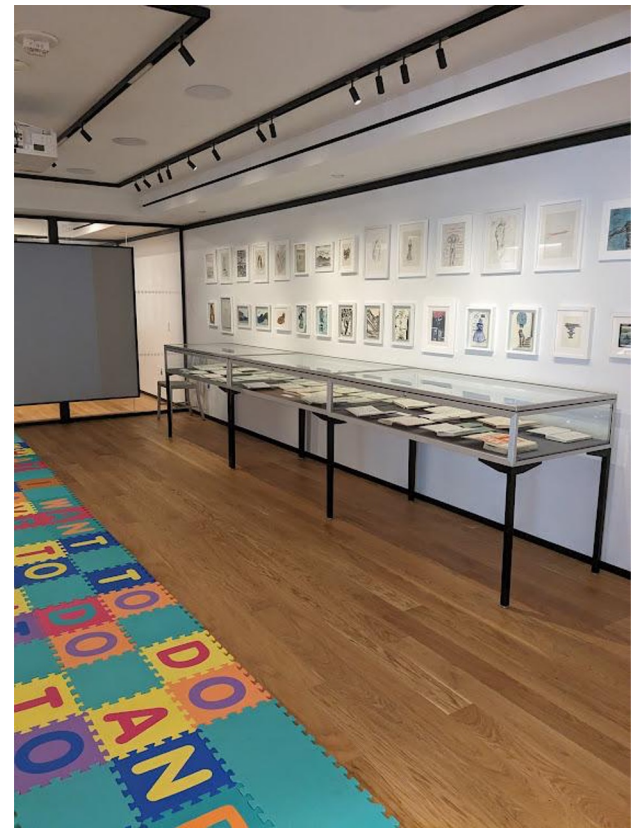
Image courtesy of NYU Special Collections





What is... Gallery, centre & west

Image courtesy of NYU Special Collections



# What is...Gallery - west side

Collections

Image courtesy of NYU Special



Collect › Conserve › Enable Access

Image courtesy of NYU Special Collections



New York University  
Special Collections Center

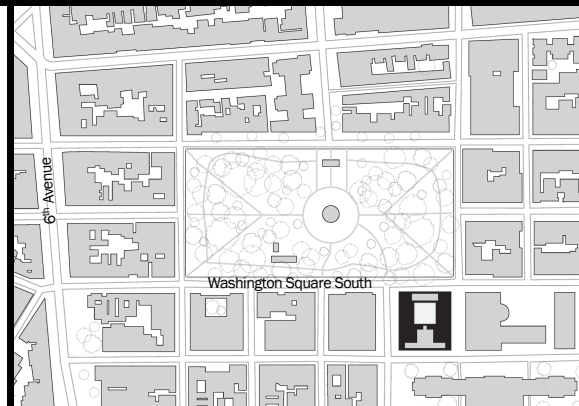
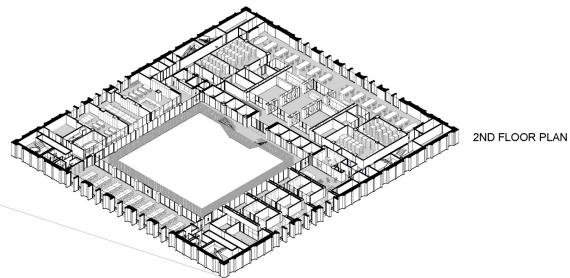
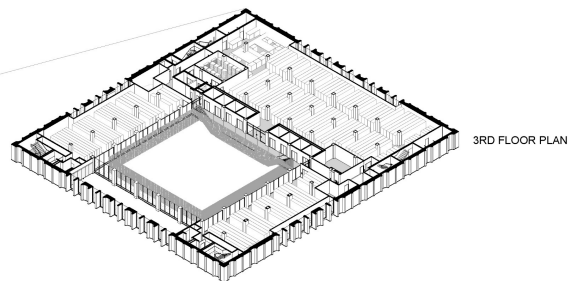
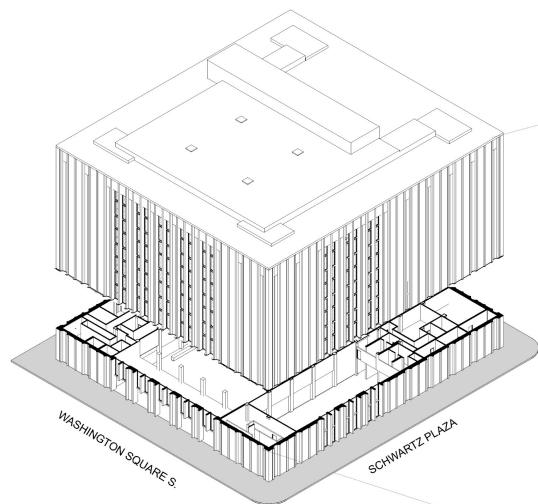
CANNONDESIGN

Philip Johnson's  
Elmer Holmes Bobst Library

OPENED 1973

11  
stories

425,000  
square feet



## PROJECT STATS

---

2<sup>nd</sup> & 3<sup>rd</sup>

Floors

---

68,000

square feet

---

9'-10" & 11'-8"

floor to floor

---

3

phases of construction

---

3

Special Collections co-located

---

## DESIGN AWARDS & RECOGNITION

---

2020

Architizer A+ Awards, Institutional Libraries, Special Mention

---

2020

AIANY Design Awards, Interiors, Merit Award

---

2020

ALA/IIDA Library Interior Design Awards, Academic Libraries

---

2020

Architectural Record, Education Facilities

---



## Project Goals

---

**Create a sense of arrival** to Special Collections.

---

**Reflect the unique/unifying identity** of the three collections.

---

**Exhibit the collection** via contact with primary source material.

---

**Prioritize security and physical care** of Special Collections materials.

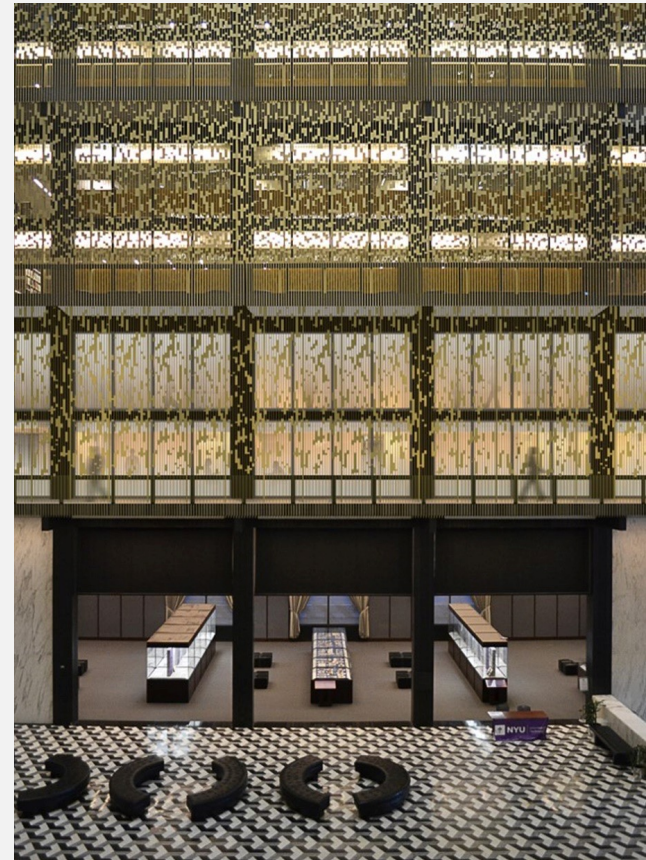
---

**Coordinate phasing** of project with funding and academic calendar.

---

PROJECT GOALS

# Sense of Arrival & Presence

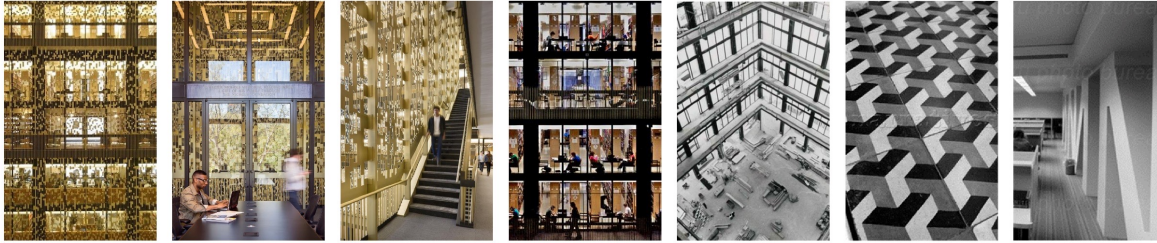




PROJECT GOALS

# Reflect the Unique Identity of the Collection

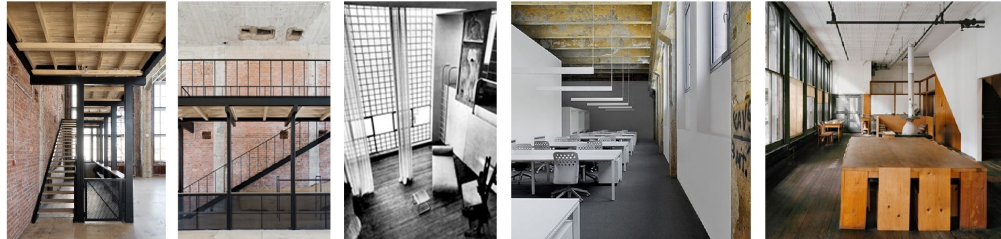
THE BUILDING



THE COLLECTION



LOFT AESTHETIC

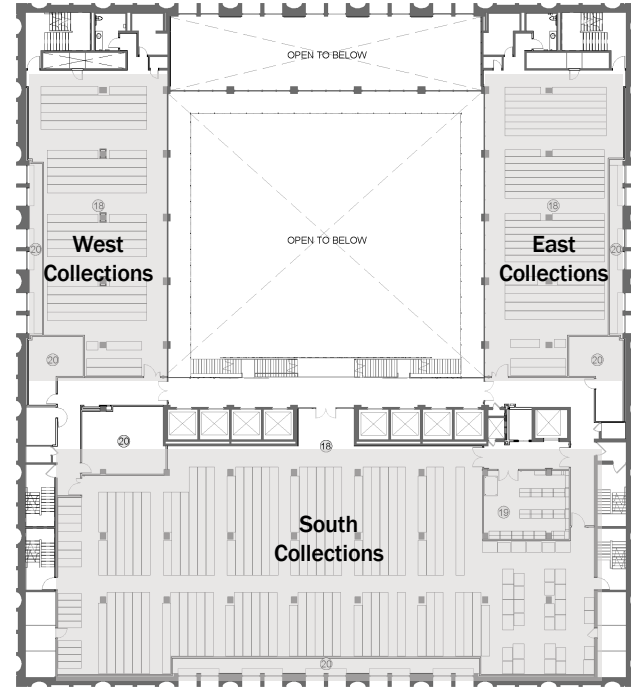


PROJECT GOALS

# Exhibit the Collection



2ND FLOOR PLAN



3RD FLOOR PLAN

PROJECT GOALS

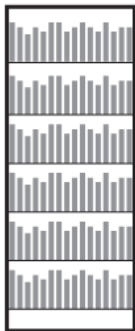
# Prioritize the Collection & Coordinate Phasing



**A**  
Standard Books

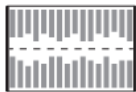


12/24" DEEP  
36" WIDE

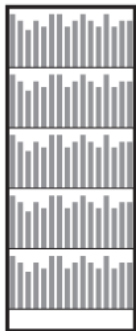


6 TIERS DF  
12.75-14.25" CLEAR  
3 LF per SHELF  
36 LF per DFS

**B**  
Oversize Books  
11-15"

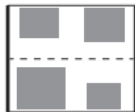


15/30" DEEP  
36" WIDE



5 TIERS DF  
15.6" CLEAR  
3 LF per SHELF  
30 LF per DFS

**C**  
Oversize Books  
15-18"



15/30" DEEP  
36" WIDE



8 TIERS DF  
9.75" CLEAR  
4.5 BOOKS per SHELF  
72 BOOKS per DFS

**D**  
Oversize Books  
18-24"



15/30" DEEP  
36" WIDE



8 TIERS DF  
9.75" CLEAR  
3 BOOKS per SHELF  
48 BOOKS per DFS

**E**  
Oversize Books  
greater than 24"



15/30" DEEP  
36" WIDE

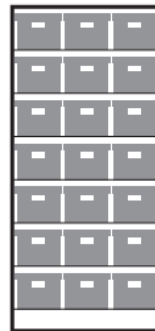


8 TIERS SF  
9.75" CLEAR  
3 BOOKS per SHELF  
24 BOOKS per DFS

**F**  
RSB Boxes

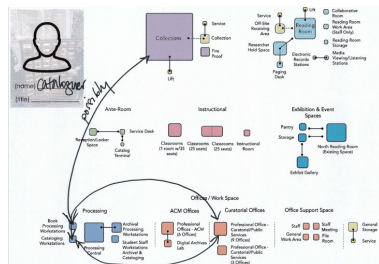
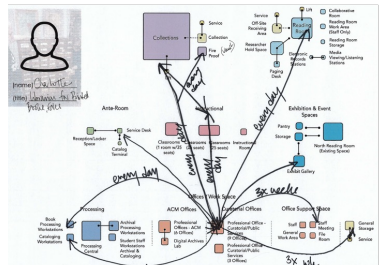
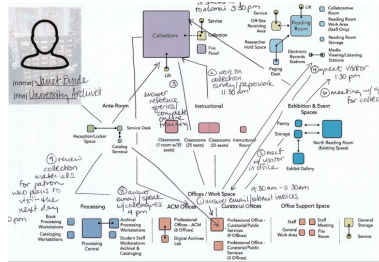
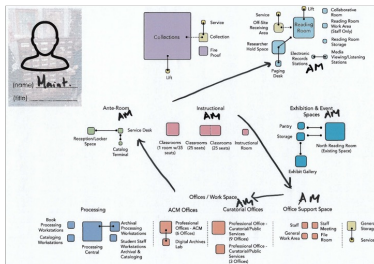
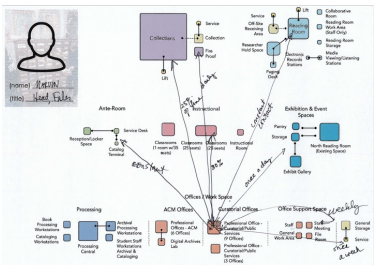
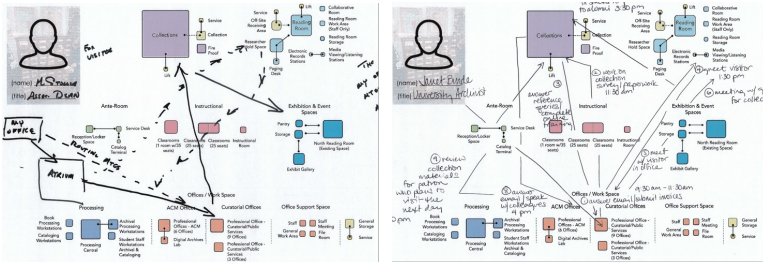


15/30" DEEP  
42" WIDE



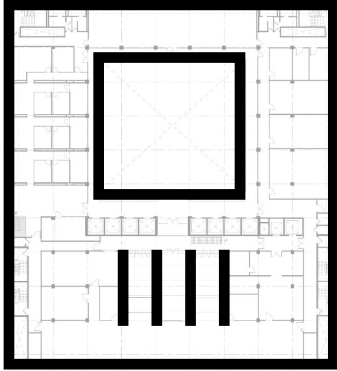
7 TIERS DF  
11.25" CLEAR  
3.15 LF per SHELF  
41.1 LF per DFS

# Managing Change

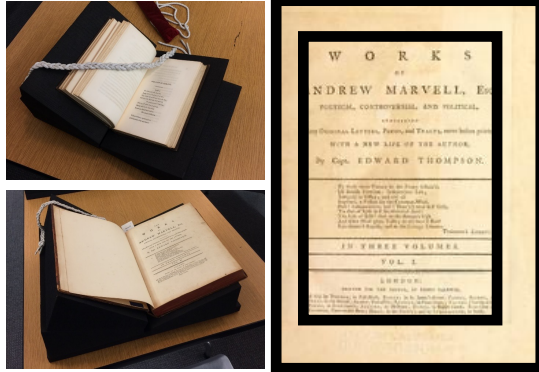


# Framing the Experience

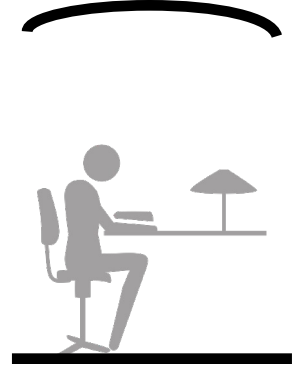
THE BUILDING



THE COLLECTION

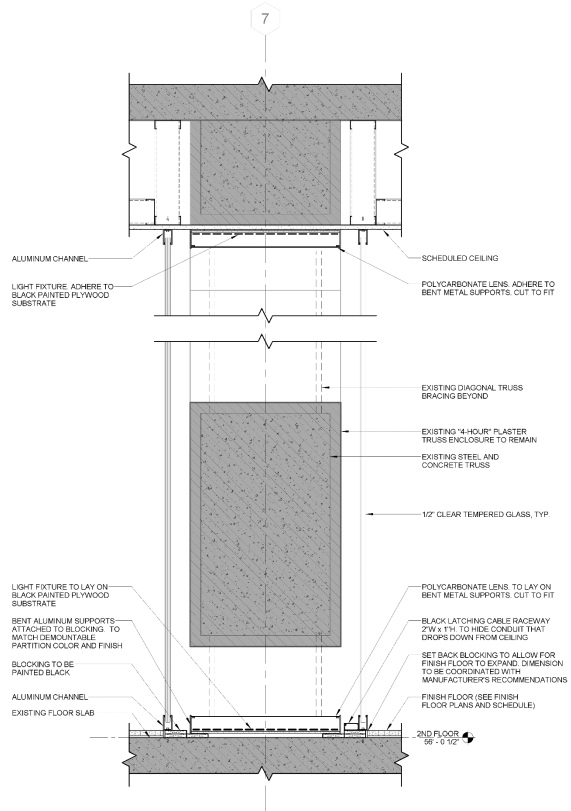


THE RESEARCHER

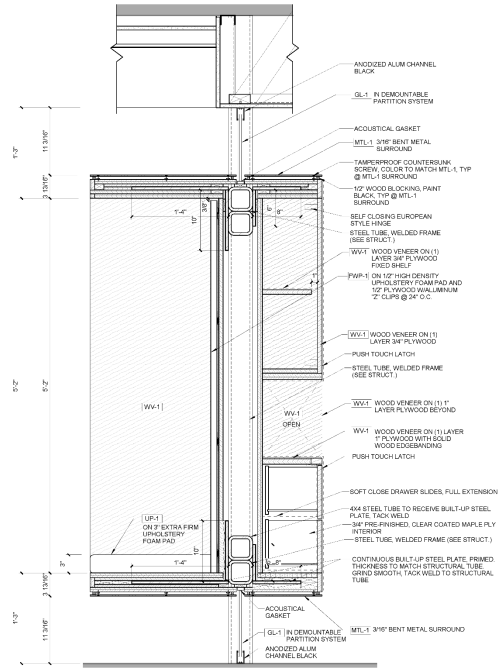




## DESIGN DETAILS

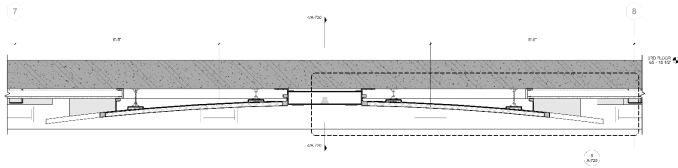
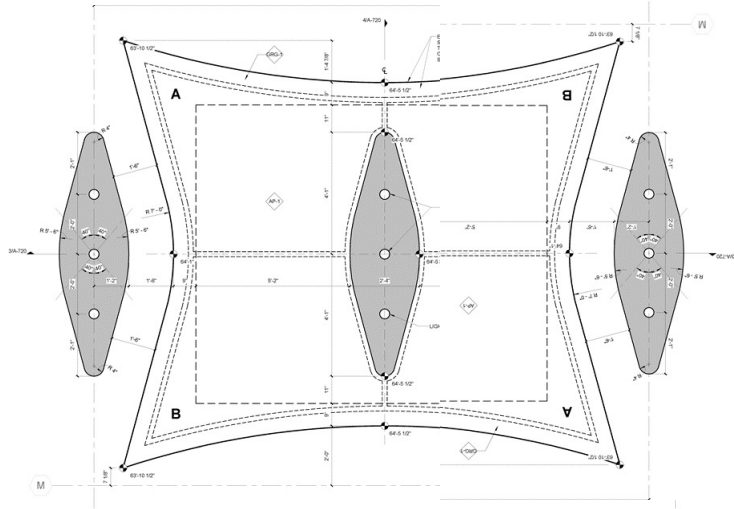


## DESIGN DETAILS





## DESIGN DETAILS



## Special Thanks

- New York University Libraries & Office of Construction Management
- Thornton Tomasetti, Structural Engineering
- Jaros, Baum & Bolles, MEP, AV/IT, Security Engineering
- Vidaris, Building Envelope Consulting
- R.P. Brennan, General Contractor
- CannonDesign, John Reed, Carisima Koenig, Brad Lukanic, Frances Fox, Andrew Fisher, Samantha Dobrusin, Demos Simatos, Gregory Lev



CANNONDESIGN

# After the Future of Print

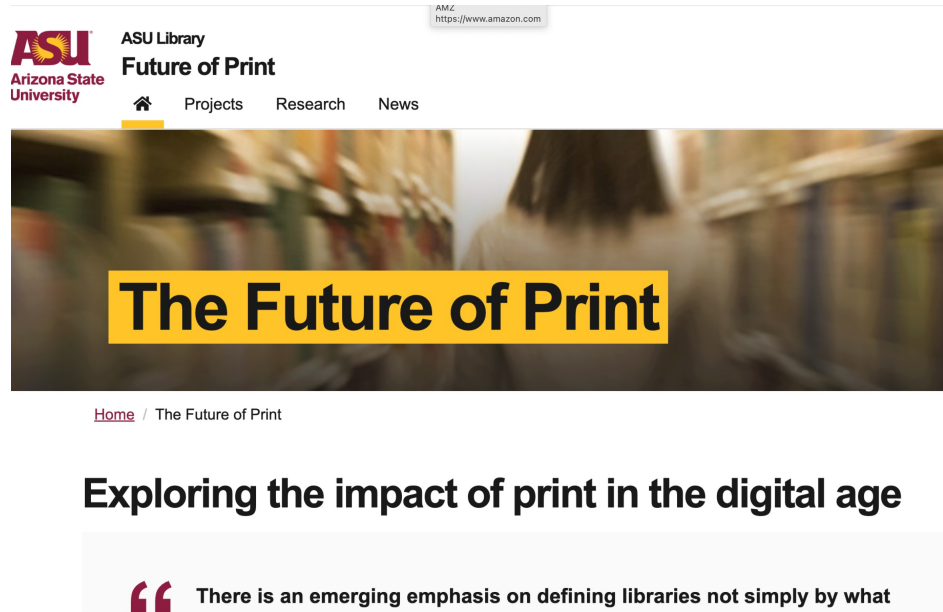
Jim O'Donnell

Arizona State University

October 2023

# The future of print

- <https://lib.asu.edu/futureprint>



ASU Library  
Future of Print

Arizona State University

Home Projects Research News

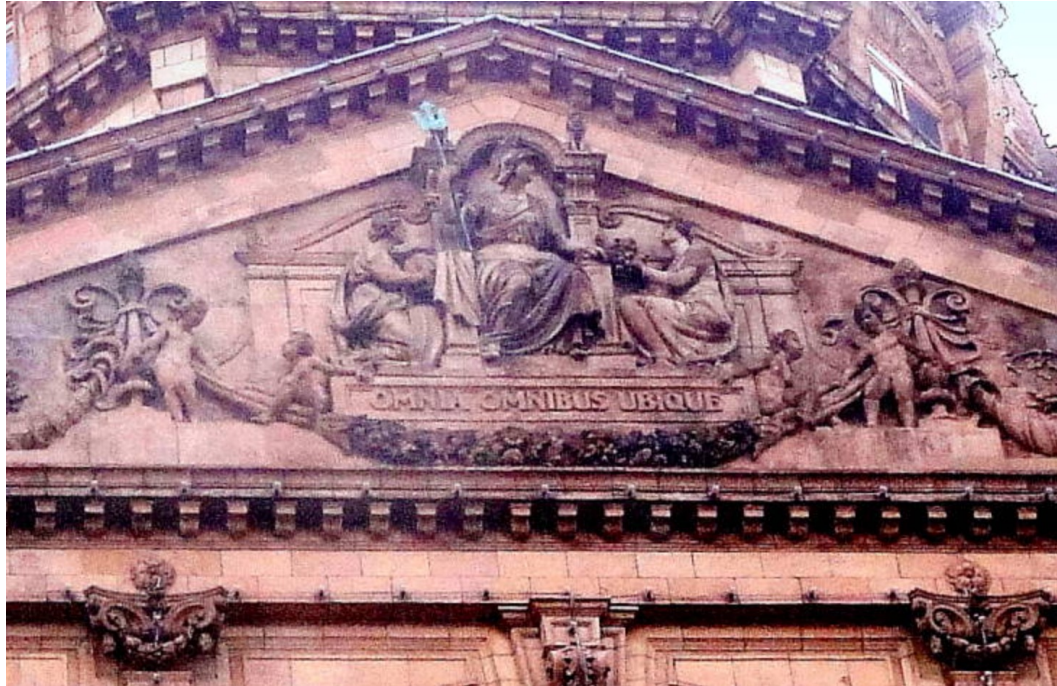
**The Future of Print**

[Home](#) / The Future of Print

**Exploring the impact of print in the digital age**

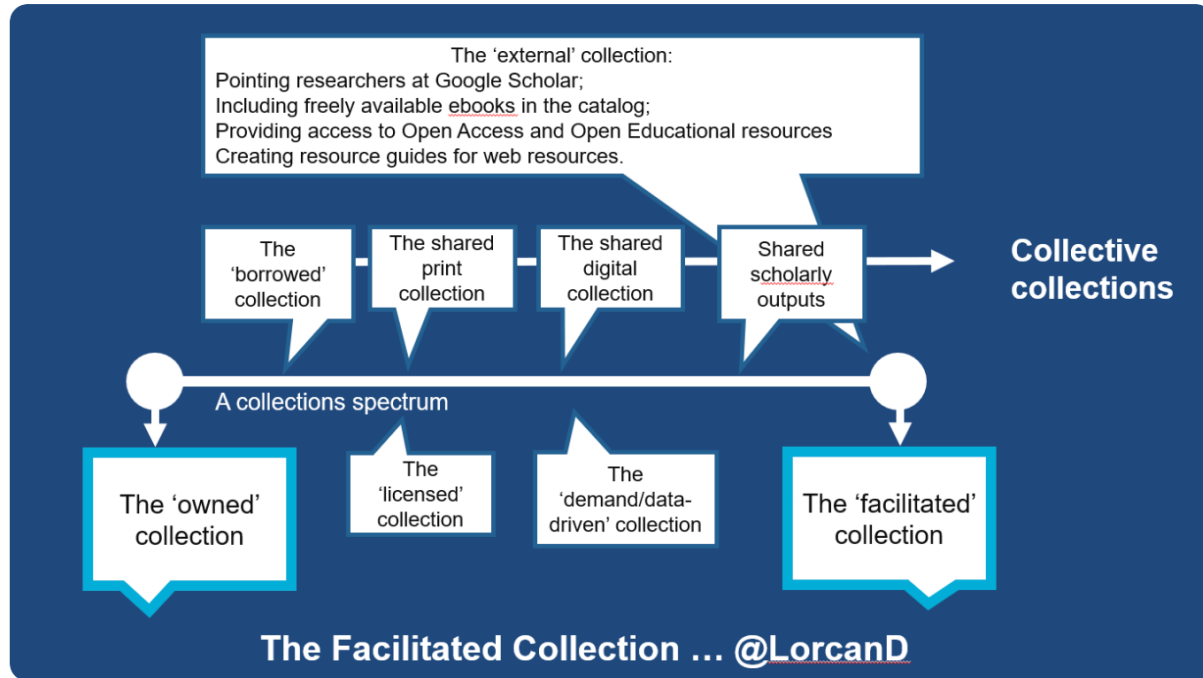
“ There is an emerging emphasis on defining libraries not simply by what

# Omnia omnibus ubique



# The facilitated collection

- <https://www.lorcandempsey.net/towards-the-facilitated-collection/>



## Three futures

- Print is archival
  - Toute la mémoire du monde
- Print is vinyl
  - Retro medium, high prestige, appreciable but limited audience
- Print is disposable
  - Family of formats, print-on-demand
  - Reinvented: binding, typography, paper, size, layout
    - The superstitious veneration of acid-free paper