

AUSTIN
PUBLIC
LIBRARY

Garden in the Sky

Embracing the Great Outdoors:
Design and Management of Outdoor Spaces

Amy M. Newman, NCIDQ, RID, LEED Green Associate

October 10, 2023



CEN
TRAL

AUSTIN
PUBLIC
LIBRARY

Austin Central Library

- Completed in 2017
- ~200,000 SF
- First LEED Platinum Library

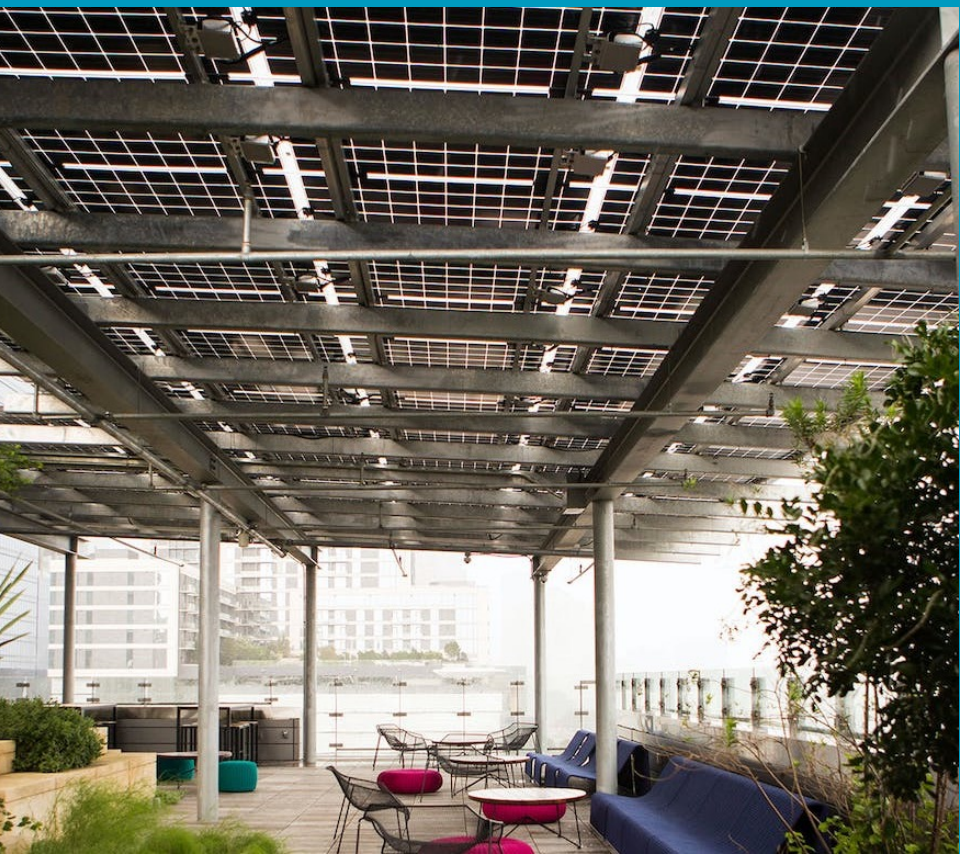
Features:

- Café
- Gift Shop
- Special Events Center
- Cooking Demonstration Area
- Innovation Lab
- Shared Learning Centers
- Outdoor Amphitheatre
- Reading Porches
- Rooftop Garden





Solar Panels

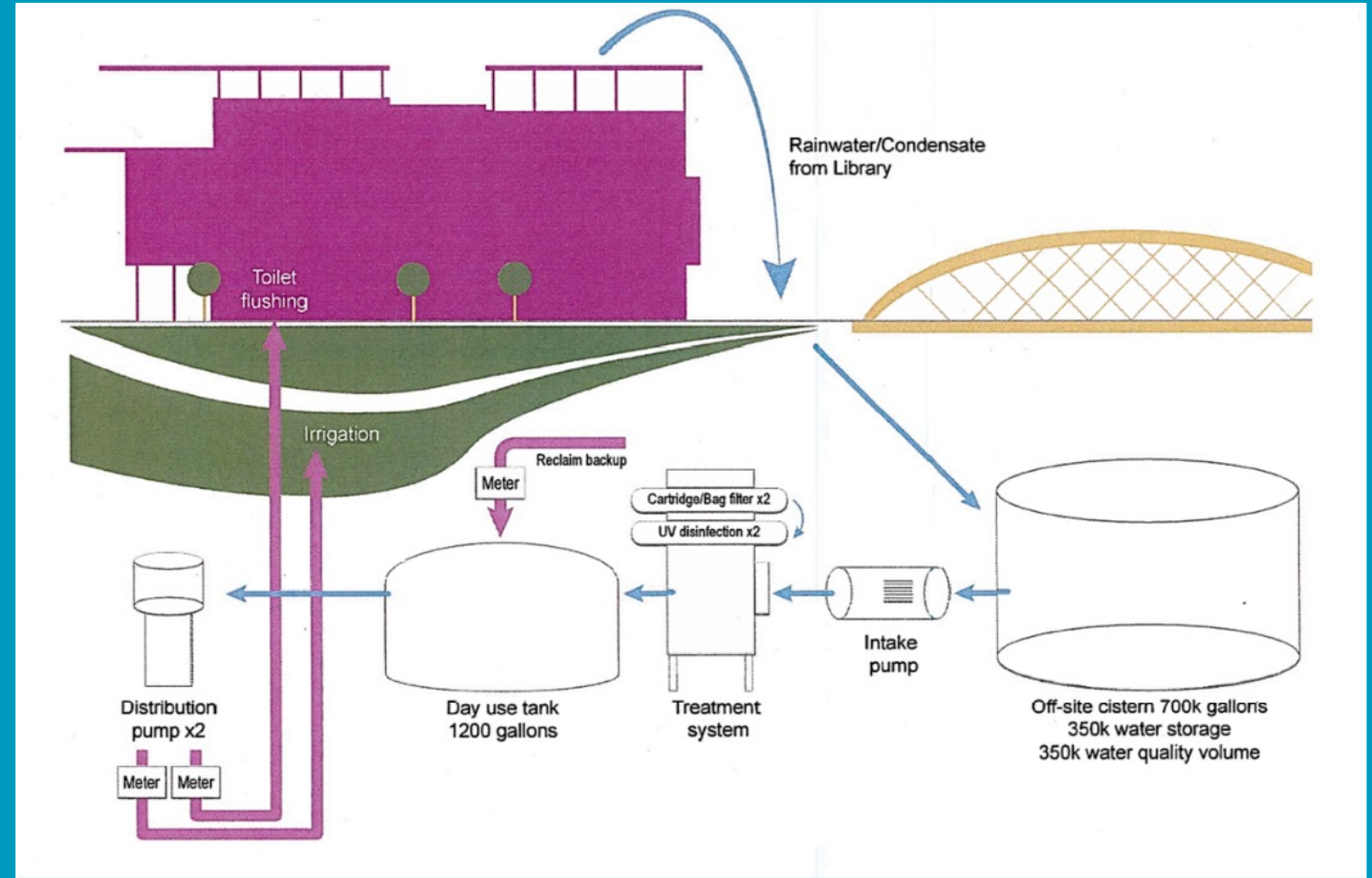


- If you look up you'll see that the roof integrates a photovoltaic array- the largest in downtown Austin- that also acts as a shade arbor
- The grid operates 30 percent more efficiently than the City's energy code requires, resulting in energy savings equivalent to the energy needs of 130 households per year

Water Reclamation System Design



TO CONSERVE WATER,
THIS BUILDING USES
NONPOTABLE RECLAIMED
WATER TO FLUSH
TOILETS AND URINALS.

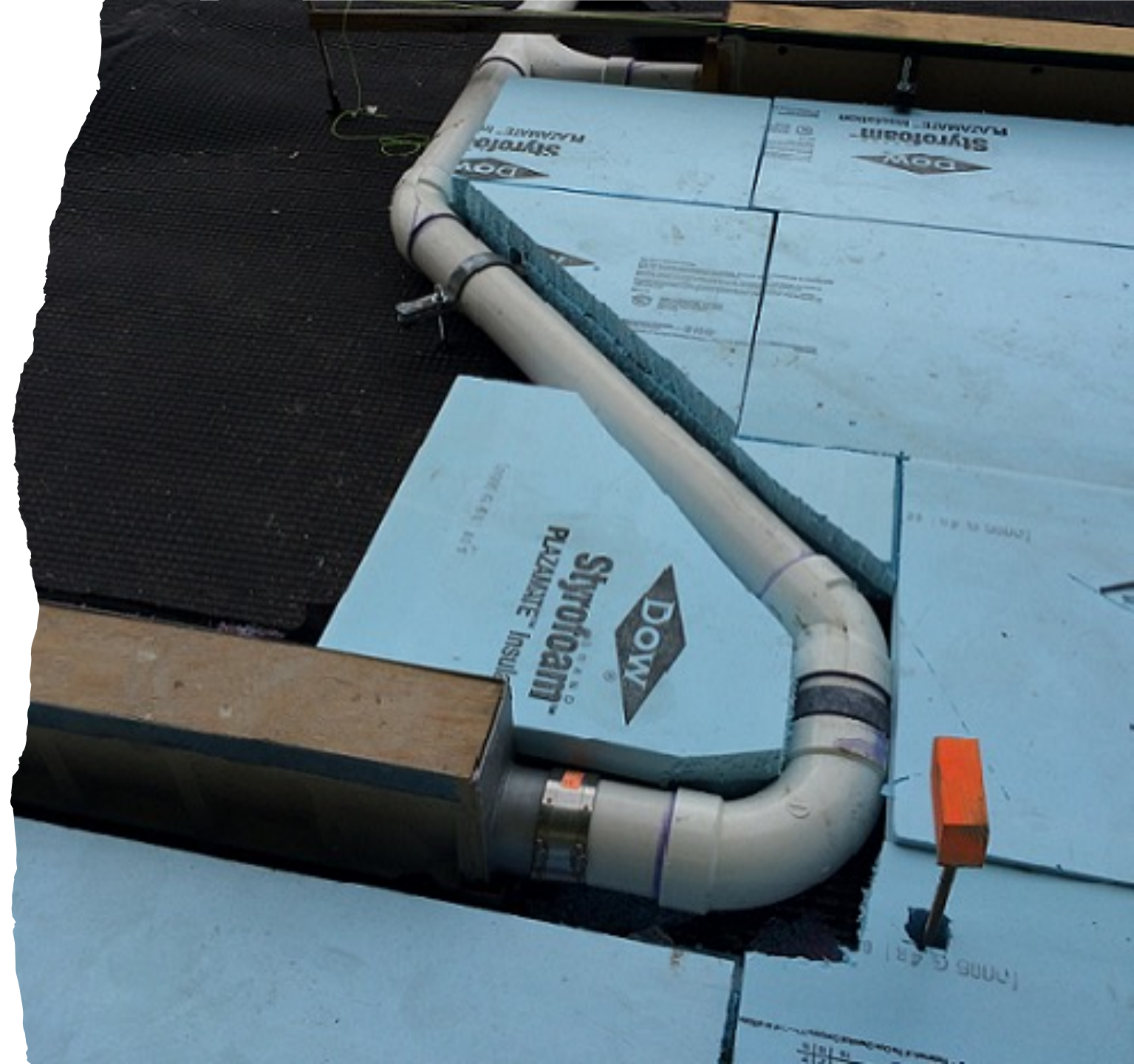


Courtesy of Austin Water – AIA Presentation 2021

Water Facts

SYSTEM OPERATION

- Potable water is supplied by City of Austin Water
- Roof drains and AC condensation account for reclaimed water source
- A rainwater catchment system feeds into a 373,000-gallon cistern housed in an old Seaholm concrete vault
- Distribution occurs via a discrete series of pipes, pumps, filters, and tanks
- Reclaimed water provides plumbing for toilets and landscape irrigation
- 100% of landscaping irrigated by rainwater/harvesting



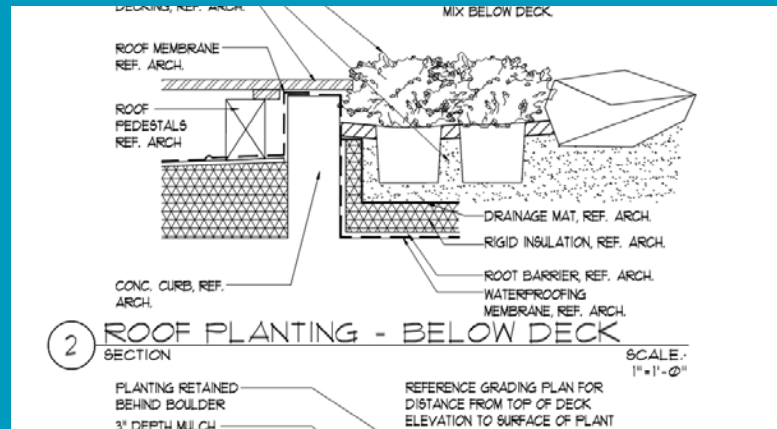


Native Limestone

Mill stone blocks and karst boulders were selected from local sources using Texas Hill Country stone



At the street level, the staggered limestone wall was designed to not only provide seating, but also acts as a barrier from traffic on Cesar Chavez Street



Work in Progress

Plants



Native plants specified with environmentally conscious design in mind including a live oak, yucca, salvia, silver ponyfoot and Texas lantana

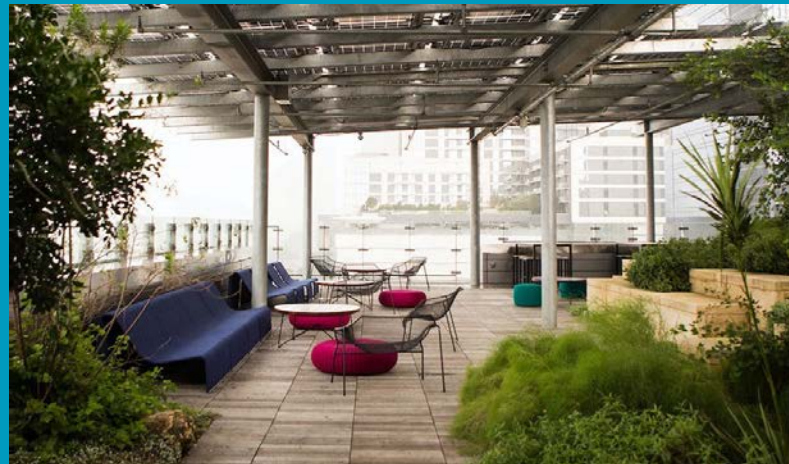
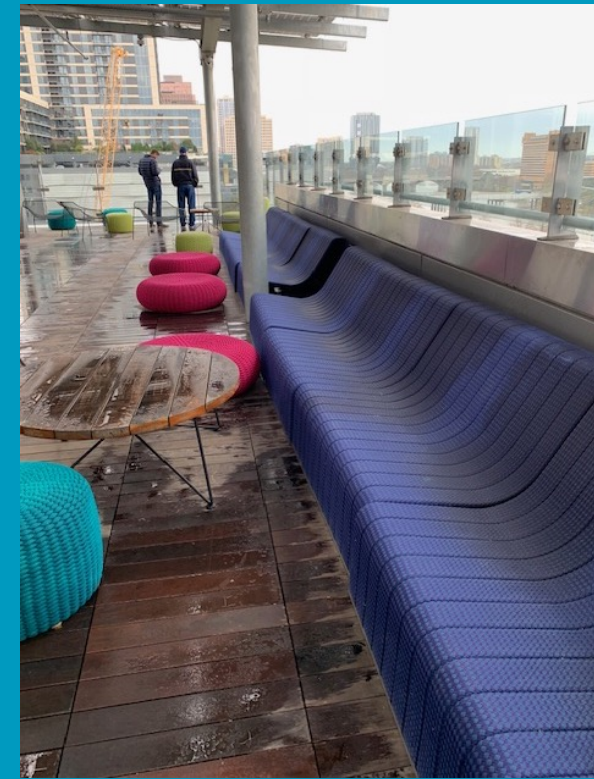
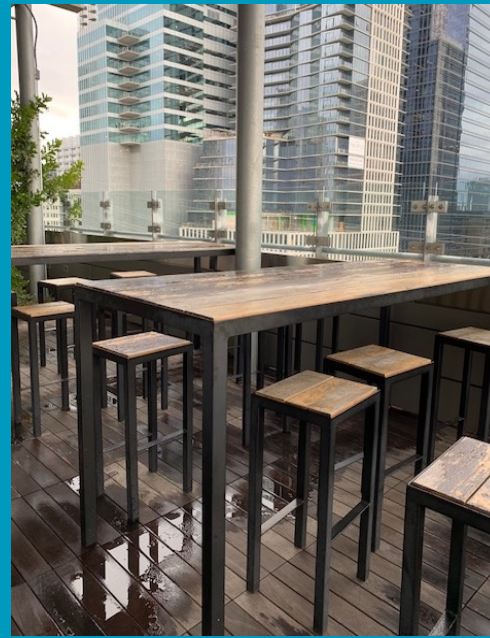
The garden creates a habitat that provides the food, shelter, and moisture needed for butterflies and other pollinators



Rooftop Garden Furniture



Total Square Footage = 3,625
Seating for 83
Standing Room for 225



Brightly colored Italian seating made from durable climbing rope wrapped on aluminum frames



Indoor Living Room

- Indoor living space adjacent to Rooftop Garden
- Used as overflow in the event of inclement weather
- Floor lamps and seating selected to create residential feel

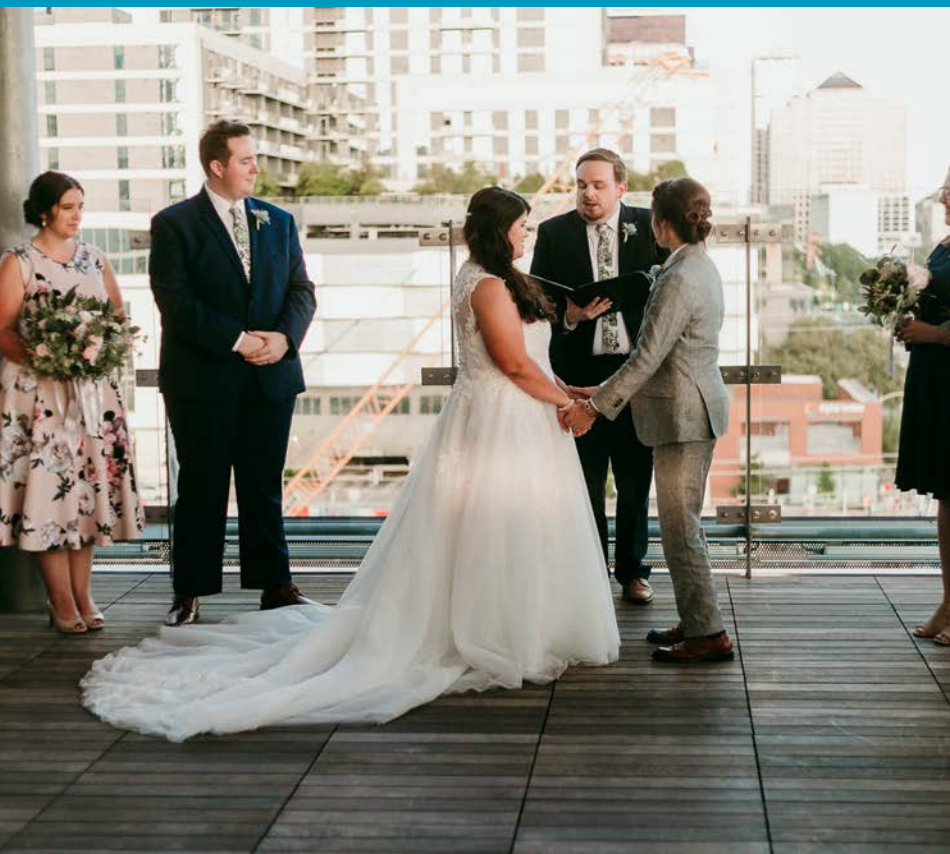




Creekside Ampitheatre

- Designed to take advantage of the banks of the adjacent Shoal Creek
- Can be rented as a venue during the day
- Stone seating for 25
- Ideal for music or readings

Outdoor Space = \$\$\$



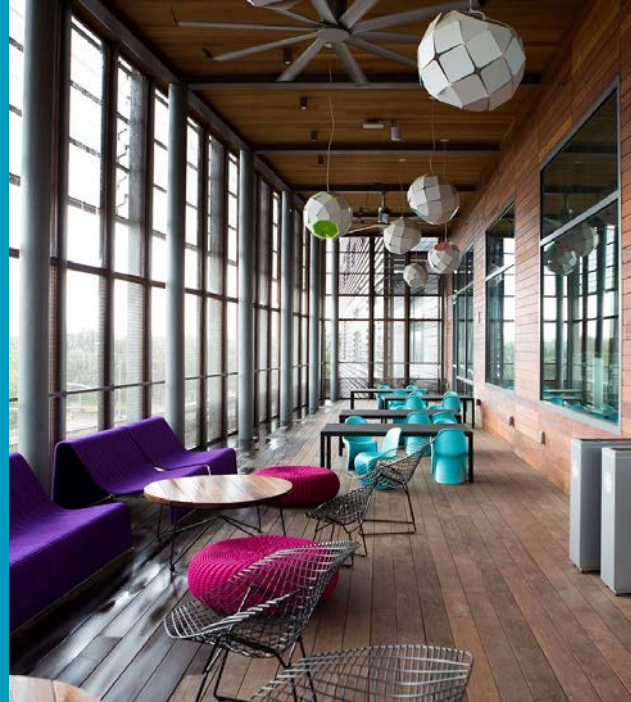
Rooftop Garden:

- Reservations (rental and co-sponsorship): 38
- Photo session requests: 15
- Rental revenue \$71,550*
- Photo session revenue: \$900
- Rental fee for Roof and Indoor Living Room: \$2700

Outdoor Amphitheater:

- Reservations (rental and co-sponsorship): 3
- Rental revenue: \$975
- Rental fee: \$300

*Actual revenue generated by Rooftop Garden is somewhat higher than shown. Several clients book specifically for the Rooftop Garden but also will add additional spaces such as our Demo Area, Art Gallery, or Special Event Center to accommodate more portions of their event (wedding ceremonies, cocktail hours, etc.)



Reading Porches

- These areas are completely screened in for safety, with seating for over 60 kids and their grown-ups, to read and enjoy the outdoors.



- The two reading porches are stacked on the Cesar Chavez Street side on the third and fourth floors

- Furnished to complement the Rooftop Garden



Credit:

- Coleman & Associates
- MWM Design Group
- Austin Water
- Atelier Wong Photography
- Michael Wheat
- Melanie Connor
- Tatiana Gonzales
- Cody Scott
- Alexandra White Photography



BUILT ENVIRONMENT STORY

DC PUBLIC LIBRARY



Jaspreet Pahwa
Director, Capital Planning & Construction

Designing Libraries Conference
University of Arizona
October 2023

Jaspreet Pahwa, NCARB, LEED AP

(She/Her/Human)

Architect: Licensed in New York, Virginia, & New Delhi.

Leading **Transformative**, Award-Winning **Built Environment Endeavors for 20+ Years.**

Typologies: Tech-Centric Workspaces, Retail, Hospitality, Higher-Ed, & Civic Spaces

Director, Capital Planning, Design & Construction, DC Public Library.

Enabling Transit Oriented Joint Developments for new libraries

Led District of Columbia's first Public-Private Partnership Library anchored In A Mixed-Use Development.

Enabled First Library-Based Solar Program in DC, furthering Sustainability, Resiliency & Social Justice Goals.

Harmonizing Strains of Built Environment : **Clean Collective Carbon Karma**

Guest Speaker & Panelist: Harvard's Future of Library Design Program 2019-2023 & Designing Libraries Conference 2022, 2023

Jury Member: GSA Design Excellence Awards 2022, AGC DC Chapter 2023, & 2018

Board Member Glen Allen Cultural Arts Center, Virginia 2013-15.



DC PUBLIC LIBRARY SYSTEM

26 Libraries city wide

across 68.34 square miles

700,000 humans

22 of 26 Libraries Rebuilt/Modernized 2009 to 2022

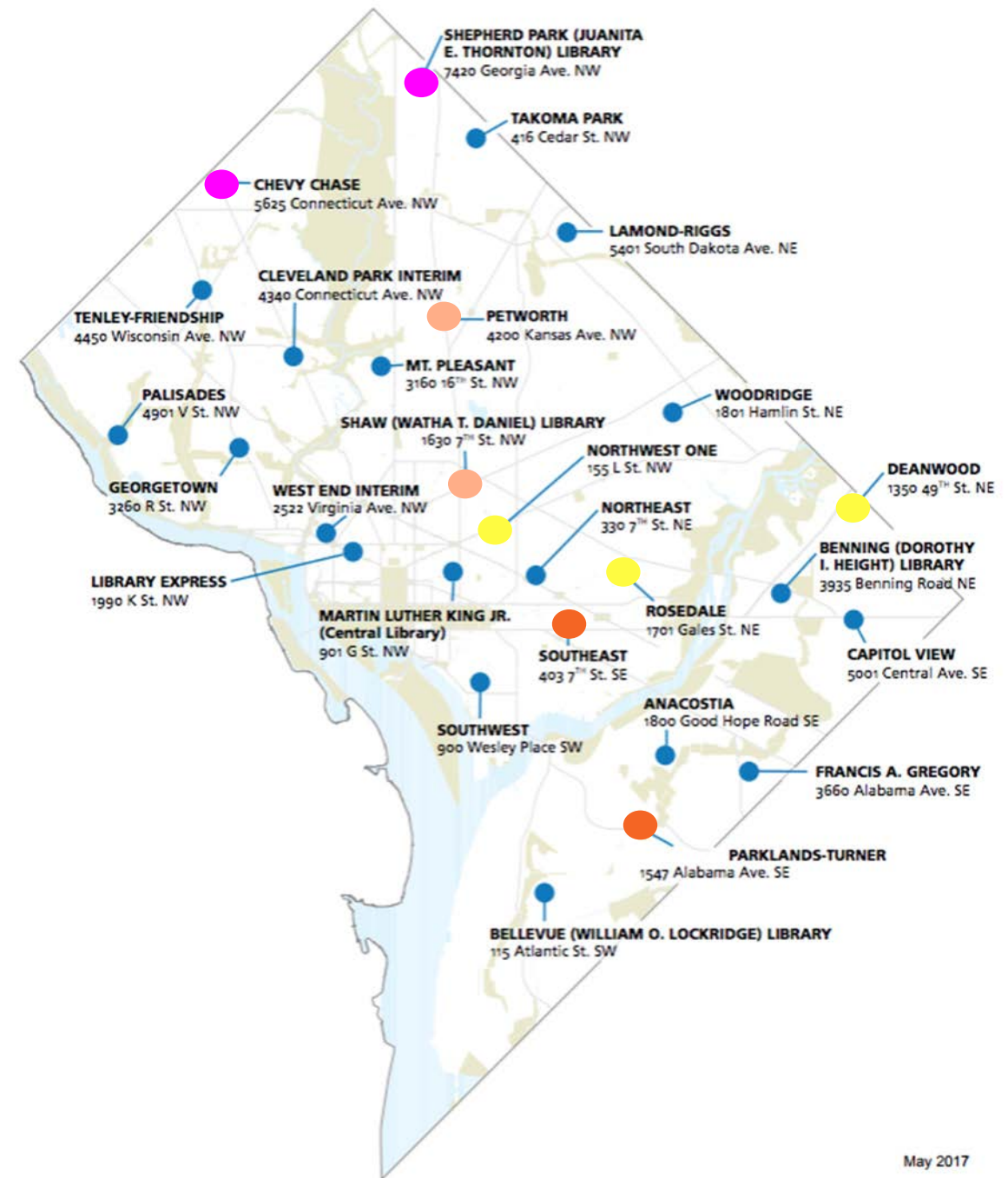
Next Libris Built Environment Roadmap

1 more expanded + modernized by 2025

4 smaller branches Replacement

Recalibration of 2 branches for evolved needs

Public/ Private Joint developments



DC PUBLIC LIBRARY BUILT ENVIRONMENT JOURNEY

takeaways to plan your journey



ROI C R E D I B I L I T Y



**IN 69 SQUARE MILE DC,
THERE ARE:**

1,100 miles of streets

1,595 miles of sidewalks

1,652 traffic signals

7,700 intersections

85 miles of bicycles lanes

60 miles of multi-use trails

241 bridges

16 tunnels

278 Capital Bikeshare stations

HYPERLOCAL



Talking About Cities

#28 The Future of Washington D.C. Public Libraries (with Richard Reyes-Gavilan)

5 months ago

Learning

click to
play



“...libraries’ as engines of human capital...evolution from mostly repositories of information to centers for community learning...”
Richard Reyes-Gavilan, Executive Director, DCPL

CIVIC BUILT ENVIRONMENT RESPONSE

Continually pursuing Excellence



Built Environment Journey



DESIGN & CONSTRUCTION EXCELLENCE TOOLKIT

- Context Sensitive, *Urban Catalyst*
- Environmentally, Ecologically, & Life Conscious
- Resilient & Adaptable to evolve w/ needs of the community
- Biophilic, maximize connection to outdoors, & natural light
- Built w/precision for high performance over lifecycle

PURSUING EXCELLENCE

Surgically Raising The Bar





Re-imagining
OPENS 2020

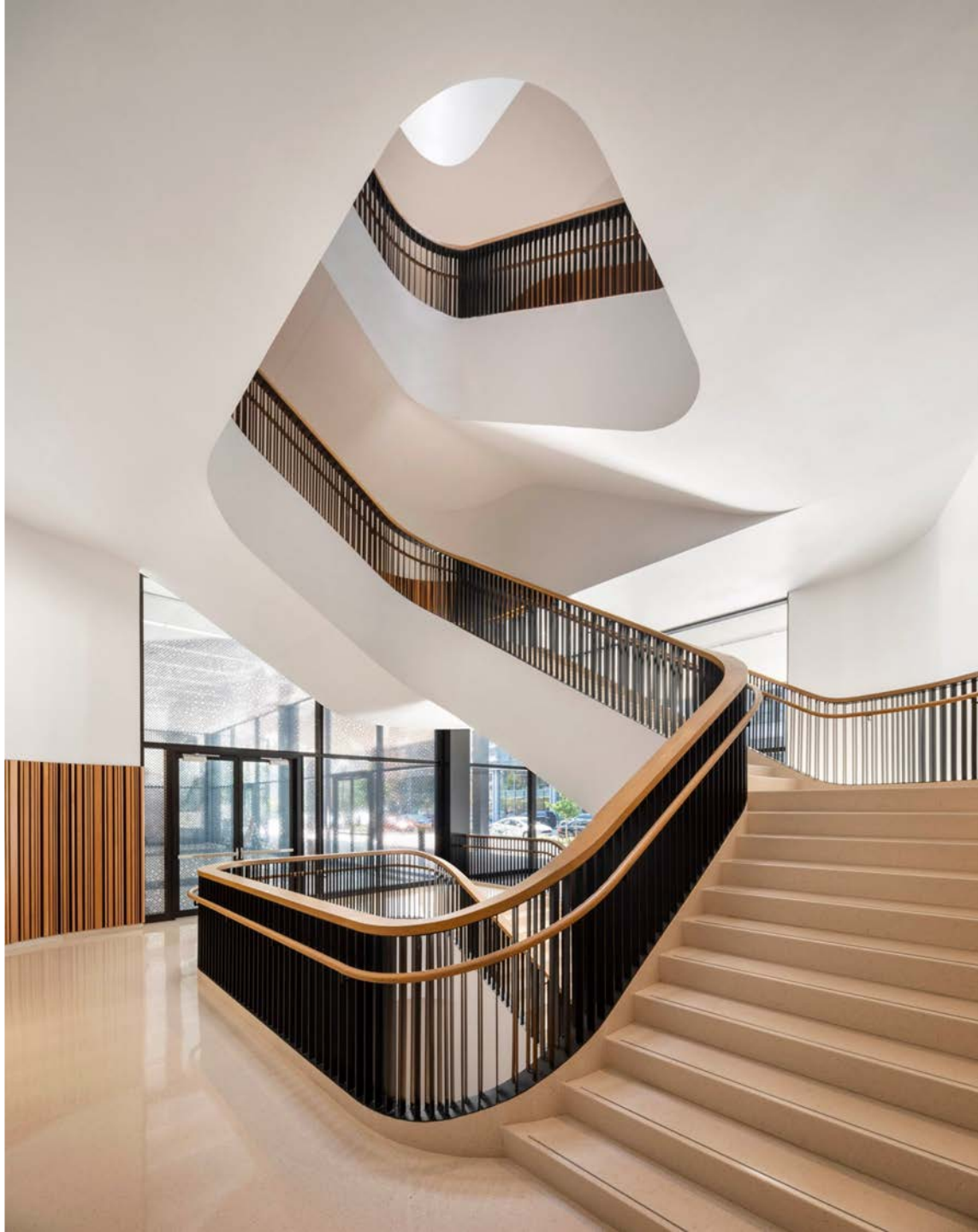
Connect

Read

Other

ONE WAY

JAIR LYNCH



LEED-NC v2009
Certification Level: Gold

-  Sustainable Sites: 23 of 26
-  Water Efficiency: 5 of 10
-  Energy & Atmosphere: 14 of 35
-  Materials & Resources: 5 of 14
-  Indoor Environ. Quality: 7 of 15
-  Innovation in Design: 6 of 6
-  Regional Priority: 1 of 4





SOUTHWEST LIBRARY

DC's First LEED Platinum Library

w/ Community Solar benefit

SOUTHWEST
Library

MORTELL

202-553-7267
202-246-4248

CALL TODAY OR SEE OUR WEBSITE







DESIGN / SOUTHWEST AERIAL





SITE / PROPOSED

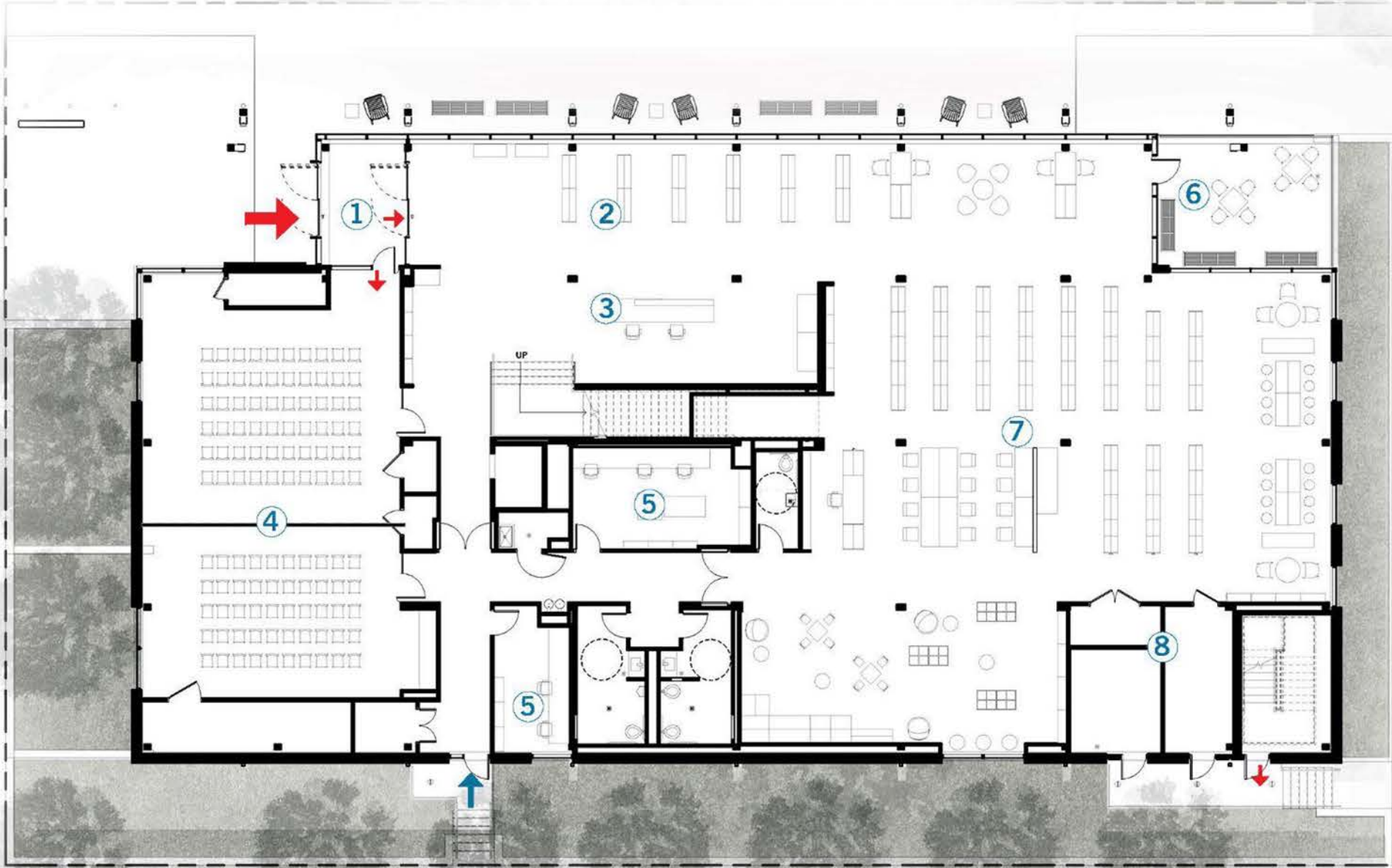




FLOOR PLAN / LEVEL 01

- 1. ENTRY
- 2. MARKET PLACE
- 3. FRONT DESK
- 4. MULTI-PURPOSE
- 5. STAFF SPACE
- 6. CHILDREN'S OUTDOOR
- 7. CHILDREN'S SERVICES
- 8. MEP

-  PUBLIC ENTRY
-  STAFF ENTRY

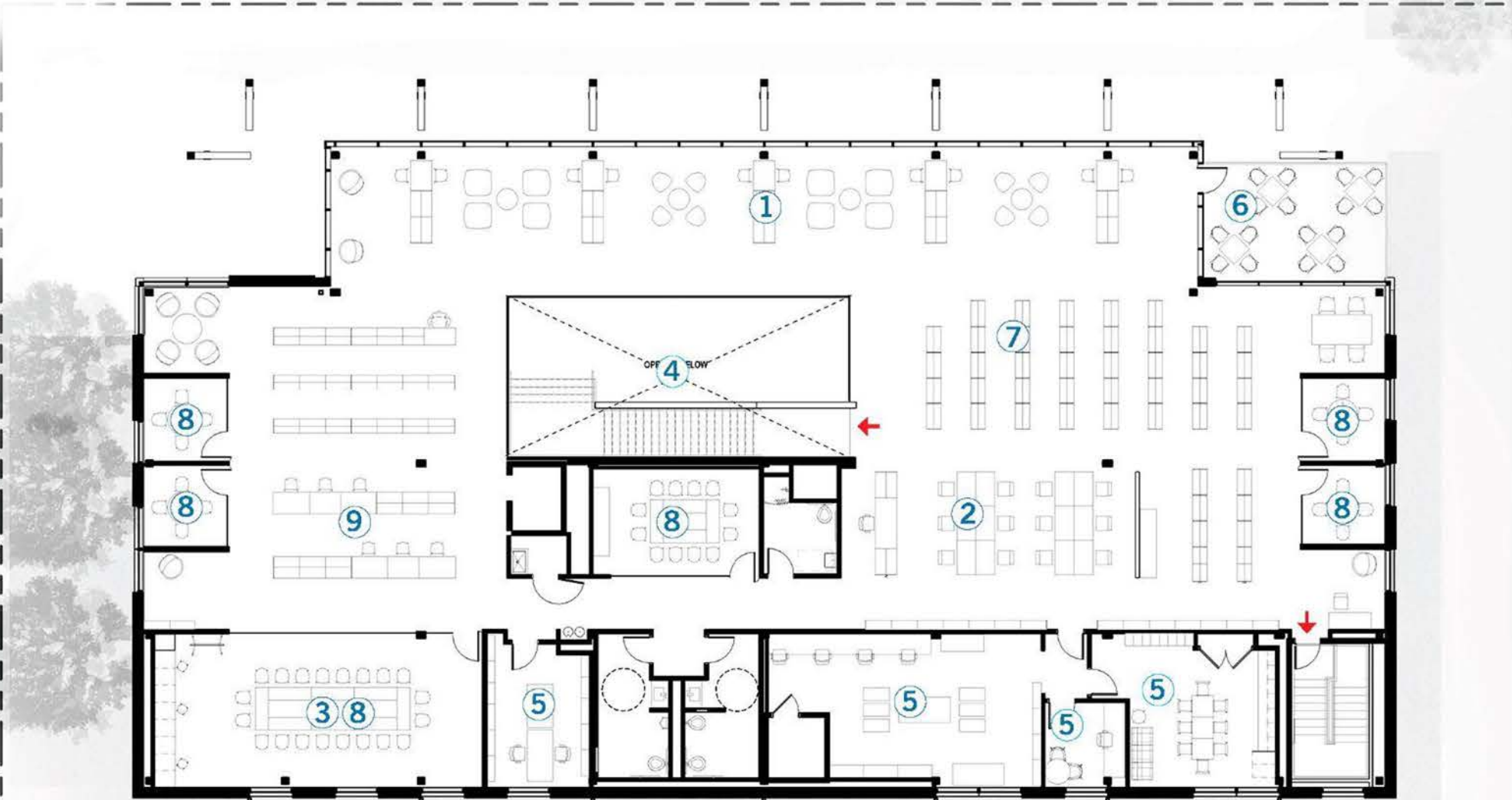




FLOOR PLAN / LEVEL 02

- 1. SEATING
- 2. COMPUTERS
- 3. INNOVATION LAB
- 4. OPEN TO BELOW
- 5. STAFF SPACE
- 6. ADULT OUTDOOR
- 7. ADULT SERVICES
- 8. MEETING SPACE
- 9. TEEN/MIXED

➔ EXITS







ROOFING

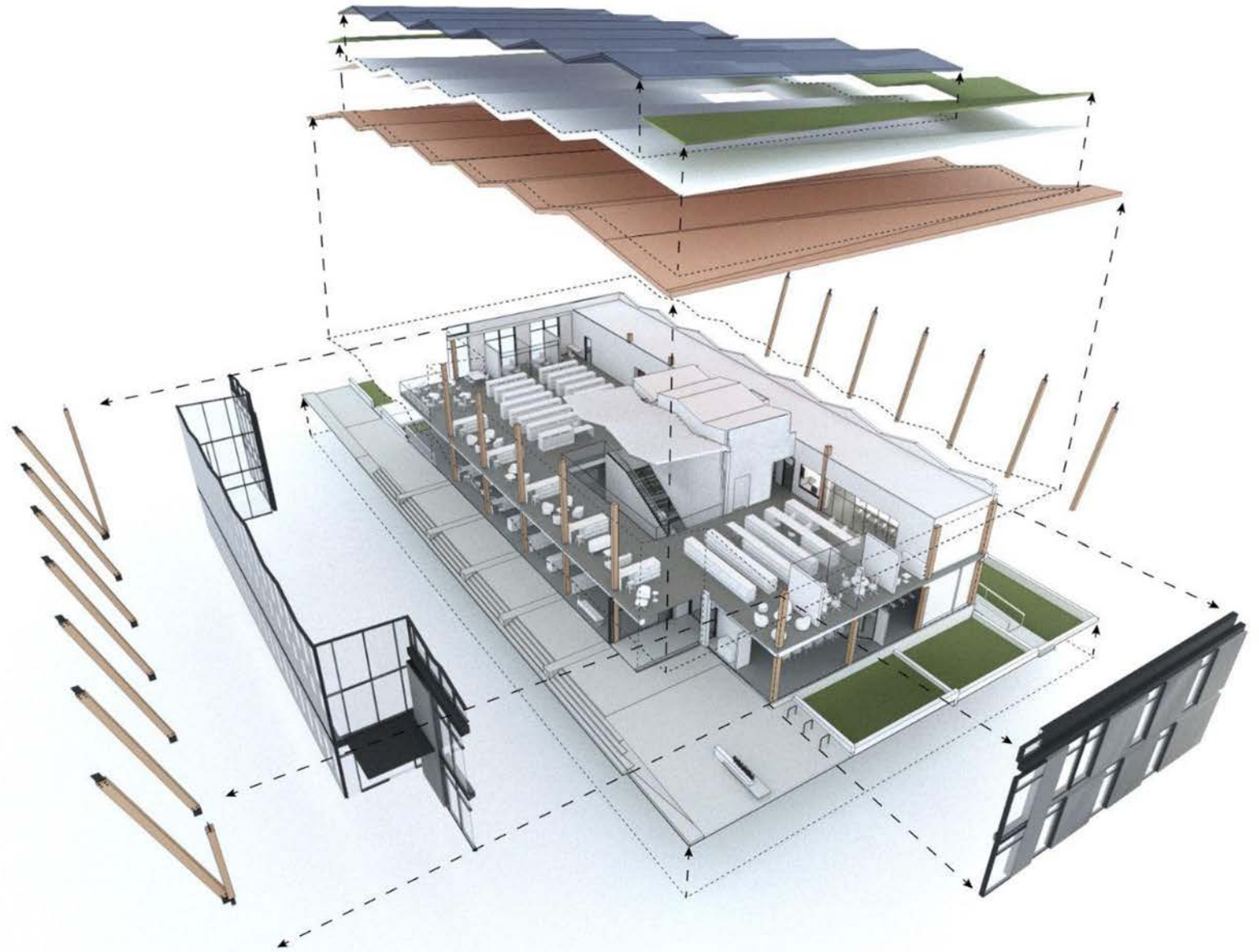
PHOTOVOLTAIC PANELS
LIVING GREEN ROOF
THERMAL INSULATION
LAMINATED WOOD ROOF PLATE
SEQUESTERS CARBON DIOXIDE
COLLECTS SOLAR ENERGY
PRODUCES OXYGEN
ABSORBS RUNOFF

INTERIOR

DIFFUSE NORTHERN DAYLIGHT
LAMINATED WOOD COLUMNS
MAXIMIZED VISIBILITY
SPACIOUS FLOOR AREA
UNIQUE STAIR FEATURE
NON-TOXIC MATERIALS
ACCESSIBLE DESIGN

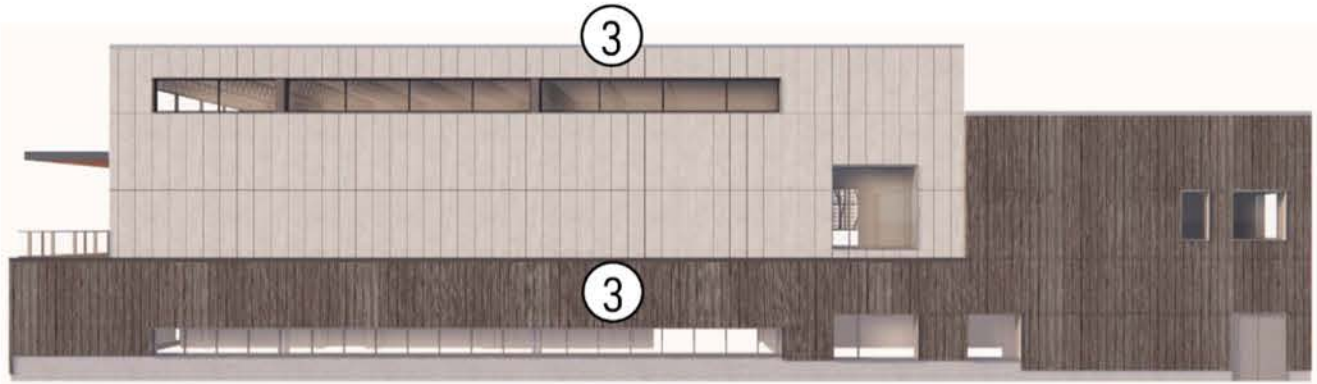
EXTERIOR

NEIGHBORHOOD INSPIRED DESIGN
GROUND FLOOR ELEVATED ON 3FT PODIUM
EXTERIOR PORCH/BALCONY
PAVILION IN THE PARK APPROACH
NATURAL BIO-SWATH VEGETATION
HIGH PERFORMANCE FACADE
CLOSE PROXIMITY TO TRANSPORTATION

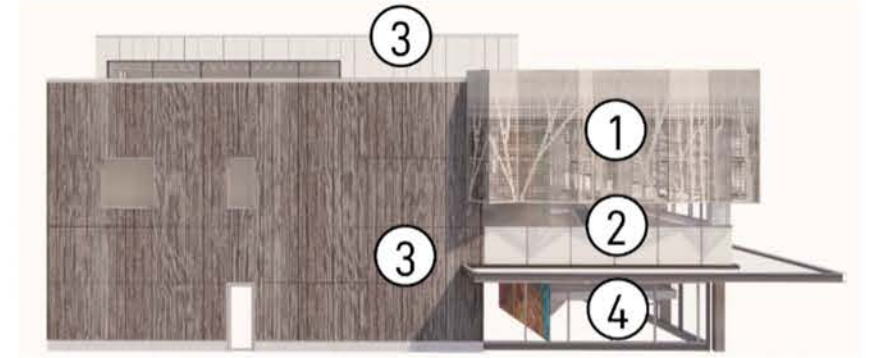




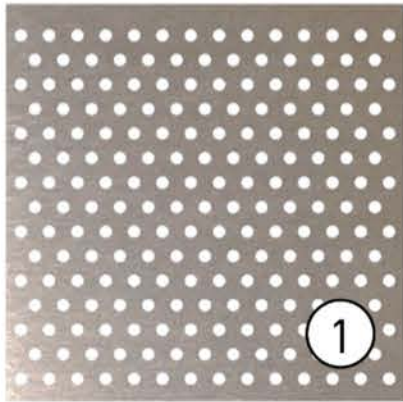
LAMOND-RIGGS LILLIAN J. HUFF LIBRARY



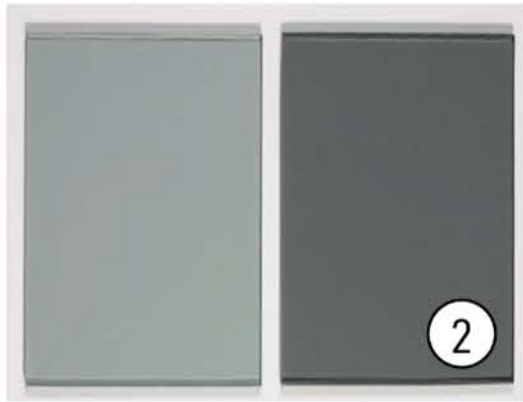
Building Elevation Northeast (Alley)



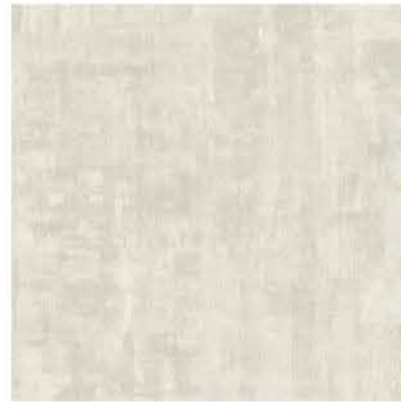
Building Elevation Kennedy Street NE



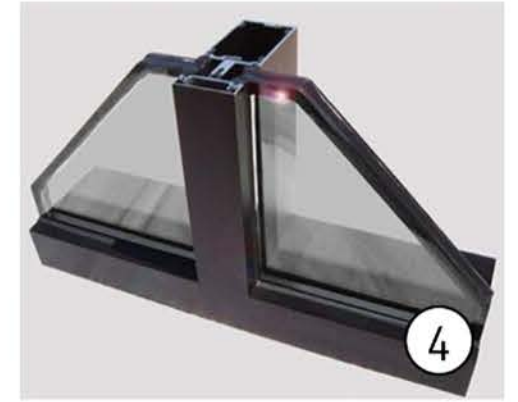
Perforated aluminum panel with metallic powder coating finish



Curtain wall system with low-E vision glass and spandrel



High Pressure Compact Laminate
Trespa Meteon (Brooklyn Classic + Greyed Cedar)



Storefront system

Lamond Riggs Library

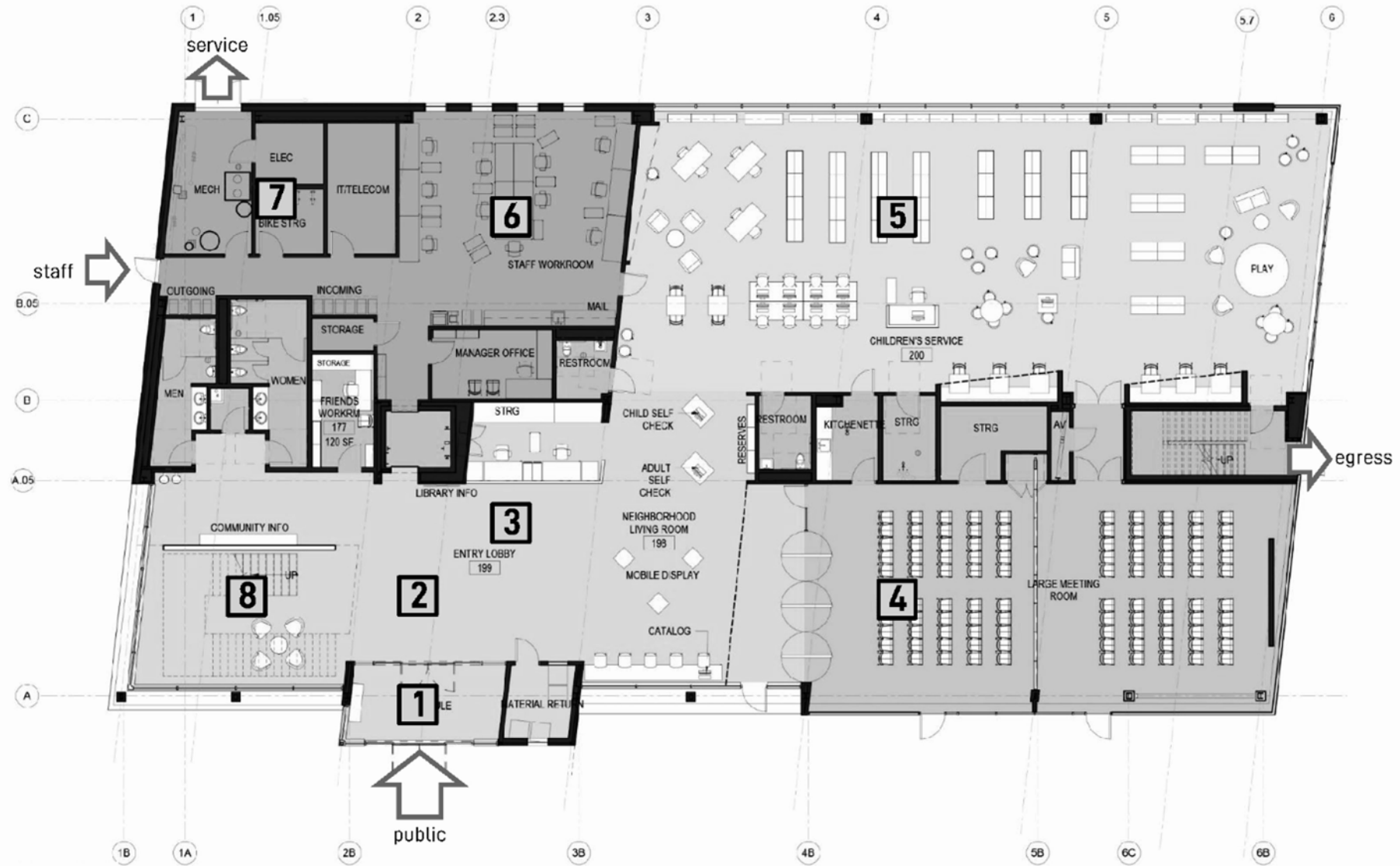
1000113688 - LEED v4 BD+C: NC





Project Review Ground Level

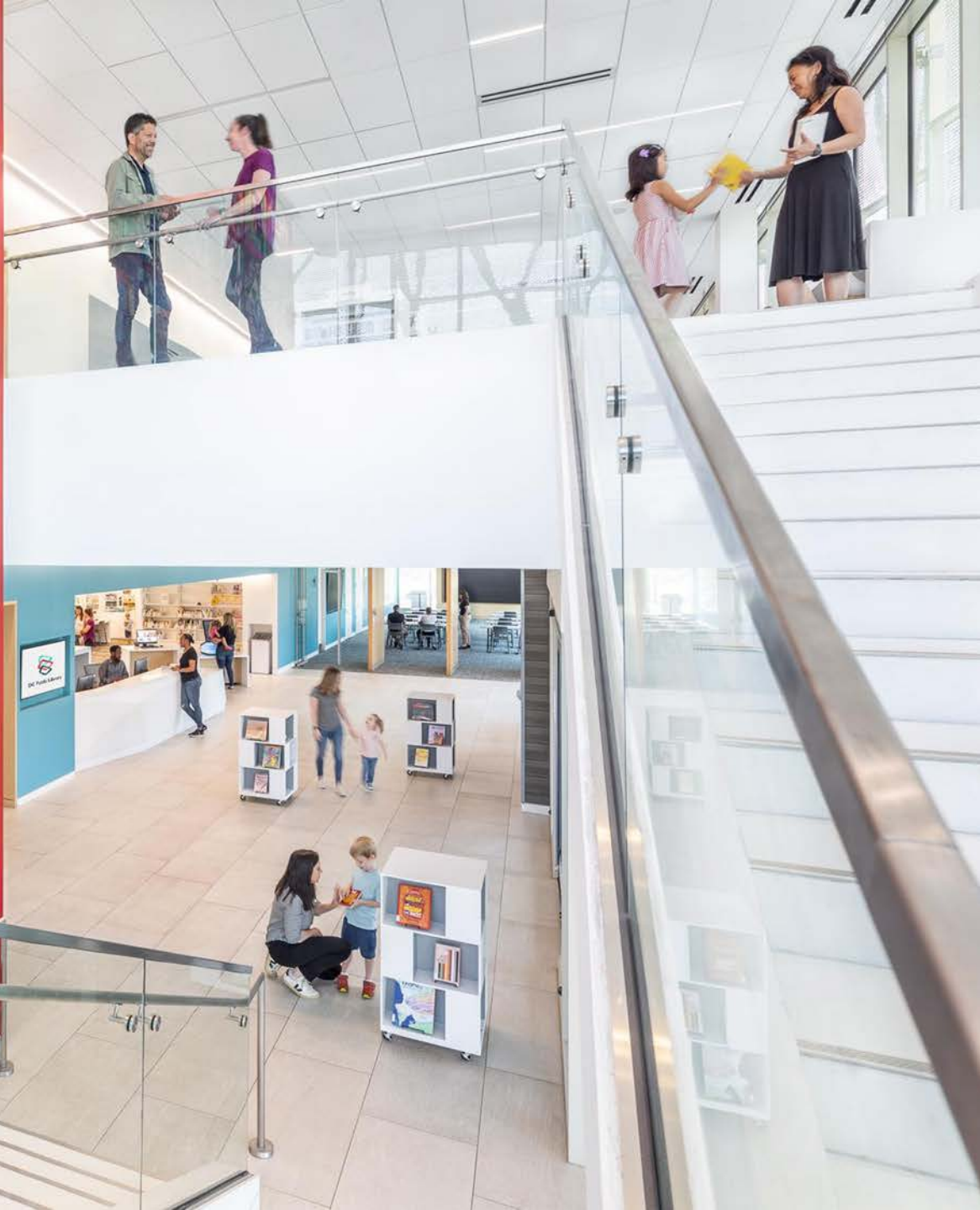
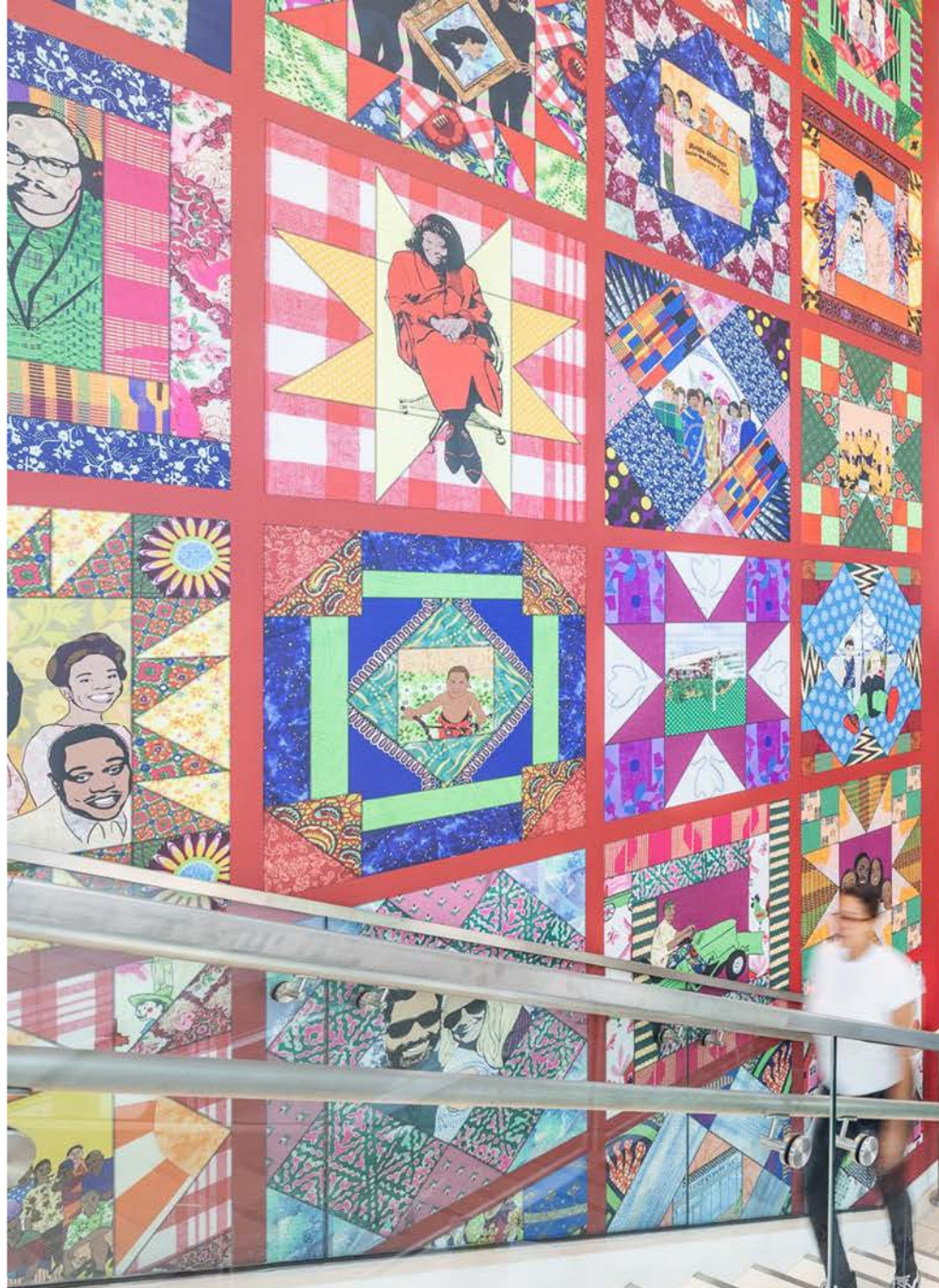
- 1 Entry Vestibule / Material Return
- 2 Entry Lobby
- 3 Information/Service Desk
- 4 Large Meeting Room
- 5 Children's Reading Room
- 6 Staff Work Room
- 7 Building Support
- 8 Open Stair / Heritage Wall



Project Review Upper Level

- 1 Information/Service Desk
- 2 Productivity Center
- 3 Study Rooms
- 4 Anything / Anytime Space
- 5 Neighborhood Living Room
- 6 Exterior Balcony
- 7 Adult Reading Area
- 8 Staff
- 9 Open Stair / Heritage Wall













WEST END LIBRARY

Washington DC's First

Public-Private Partnership

Mixed-Use Development








325,000 SF mixed-use development

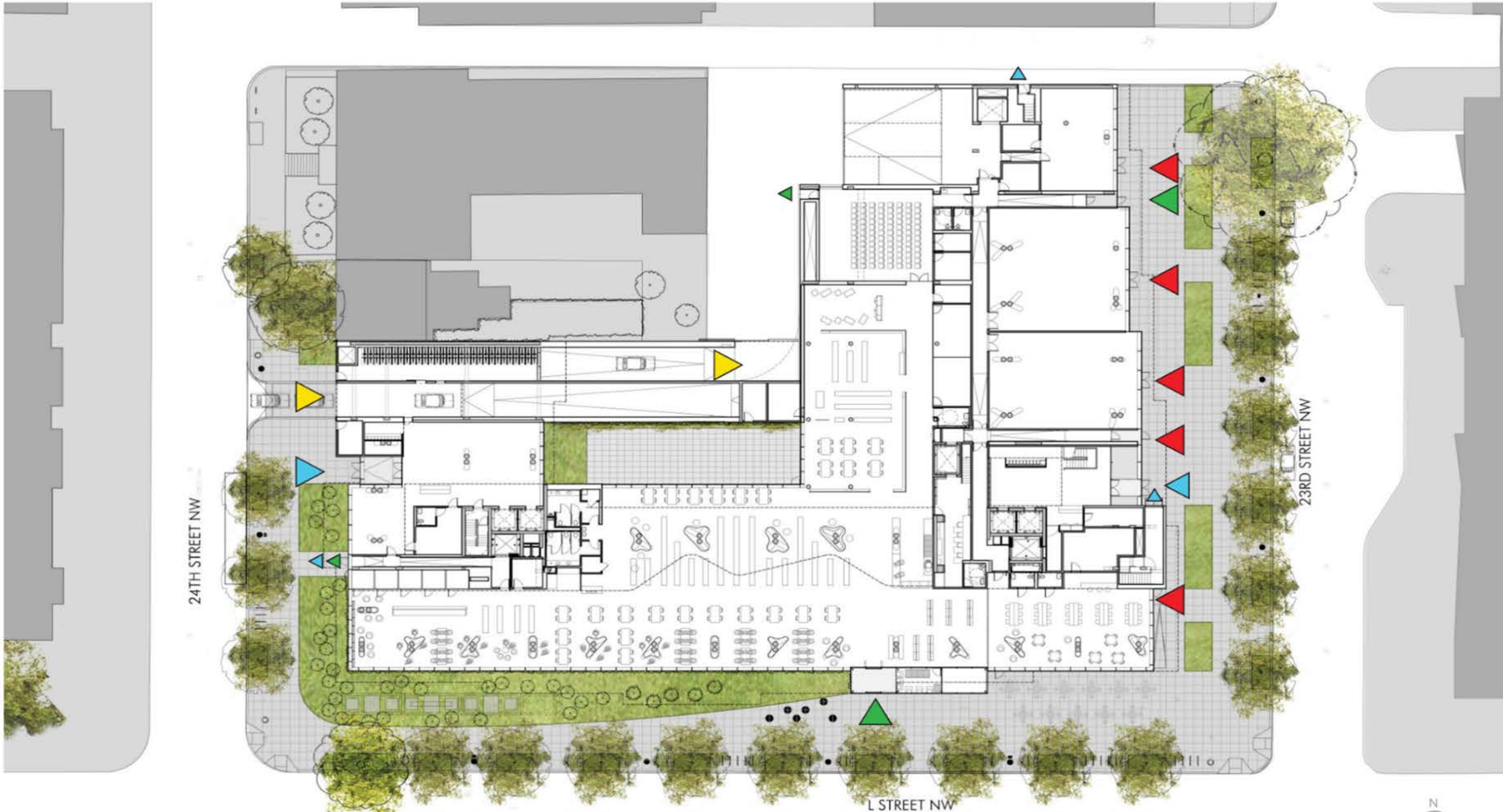
Library & Cafe at street level

**71 condominiums,
93 apartment units**

LEED-NC v2009
Certification Level: Gold

-  Sustainable Sites: 26 of 26
-  Water Efficiency: 6 of 10
-  Energy & Atmosphere: 8 of 35
-  Materials & Resources: 7 of 14
-  Indoor Environ. Quality: 12 of 15
-  Innovation in Design: 6 of 6
-  Regional Priority: 2 of 4





▲ PARKING
 ▲ LIBRARY
 ▲ RESIDENTIAL
 ▲ RETAIL



West End Library, Photo Credit: DC Public Library, Ron Ngiam Photographer



West End Library, Photo Credit: DC Public Library, Ron Ngiam Photographer



Cafe accessible from within West End Library & Street, Image Source: Bluestone Cafe

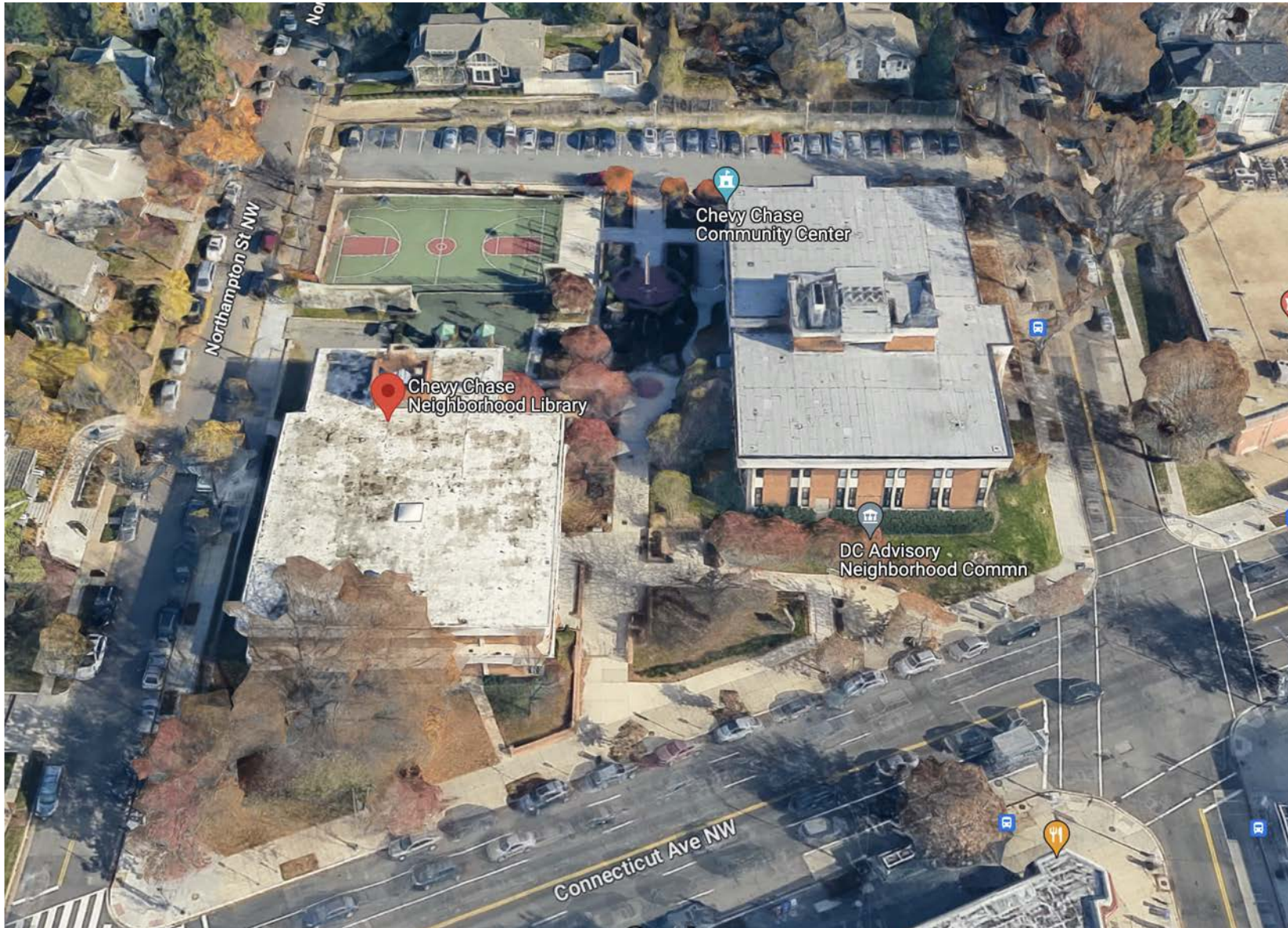


West End Library, Photo Credit: DC Public Library, Ron Ngiam Photographer



West End Library Library, Photo Credit: DC Public Library, Ron Ngiam Photographer

HYPERLOCAL REIMAGINE CIVIC CORE



73,000 SF SITE

5625 Connecticut Ave NW

ECONOMIC DEVELOPMENT ENDEAVOR

- LIBRARY
- REC CENTER
- HOUSING

SURPLUS & DISPOSITION PROCESS

LIBRARY: \$24M

\$1.1M in FY23, \$17M in FY24, \$5.9M in FY25

COMMUNITY CENTER: \$17.5M

\$6.5M in FY23 and \$11M in FY24)

HYPERLOCAL LEVERAGING UNDERUTILIZED ASSETS CITYWIDE



WMATA Board Endeavor

Transit Oriented Joint
Development

- LIBRARY
- RETAIL
- 300 HOUSING

ASPIRATION FOR FUTURE CIVIC BUILT ENVIRONMENT

**socially just, culturally rich, economically vibrant,
and
ecologically resilient & restorative**



Colorado College Charles L. Tutt Library

OUTDOOR SPACES

DESIGNING LIBRARIES X CONFERENCE 2023

JENN SIDES

OPERATIONS MANAGER



COBURN LIBRARY
1894 - 1964

Coburn Library



Charles L Tutt Library

Tutt Library

Circa 1962

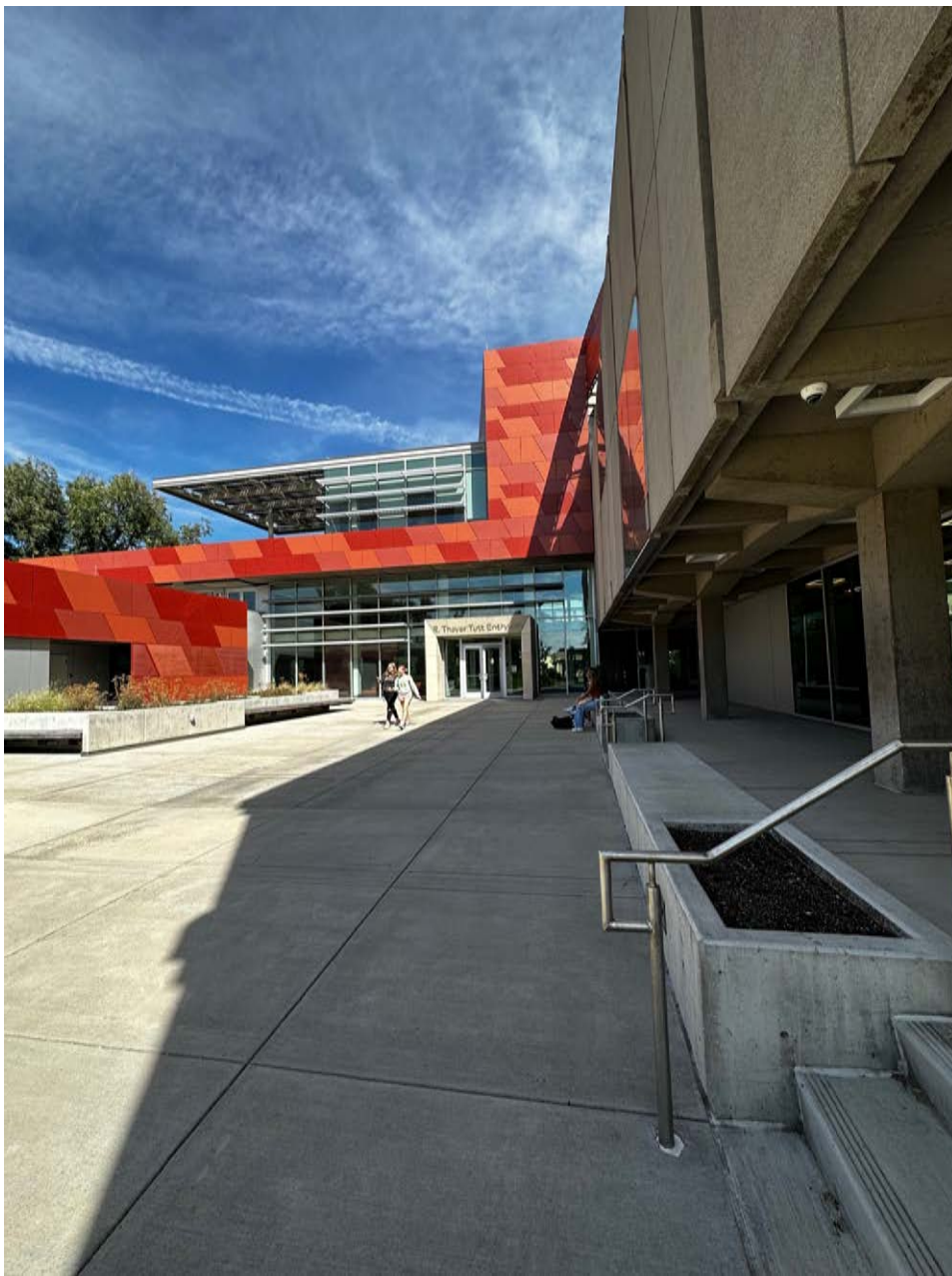


Tutt Library 2023





1st Floor Main Entrance



1st Floor Deck





Second Floor Patio

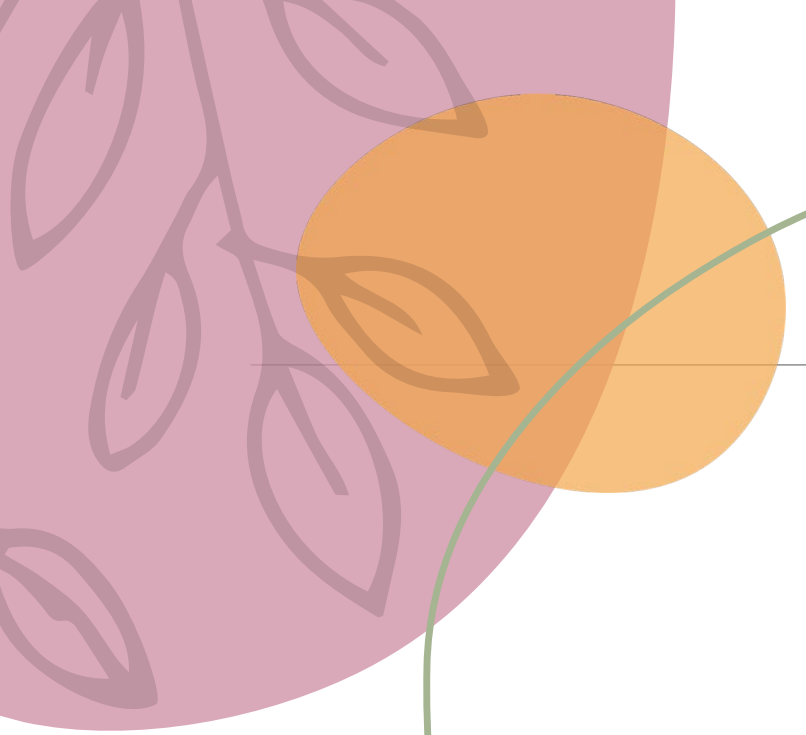


Third Floor Patio



Third Floor Patio





4th Floor Patio





4th Floor South Deck



The Front Range of the Rocky Mountains





thank you

JENN SIDES

JSIDES@COLORADOCOLLEGE.EDU

COLORADO COLLEGE



Colorado College Charles L. Tutt Library

OUTDOOR SPACES

DESIGNING LIBRARIES X CONFERENCE 2023

JENN SIDES

OPERATIONS MANAGER



COBURN LIBRARY
1894 - 1964

Coburn Library



Charles L Tutt Library

Tutt Library

Circa 1962

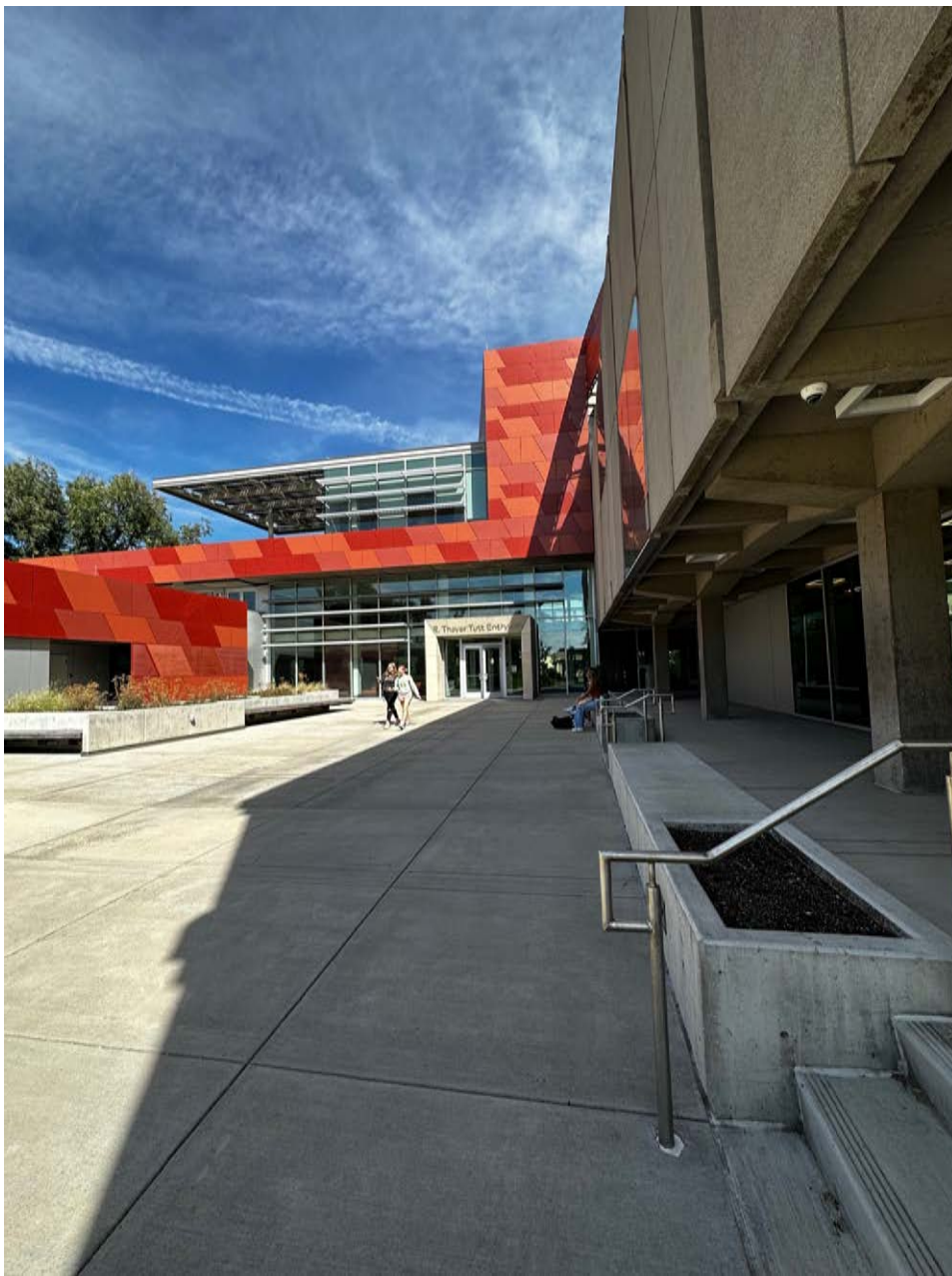


Tutt Library 2023





1st Floor Main Entrance



1st Floor Deck





Second Floor Patio

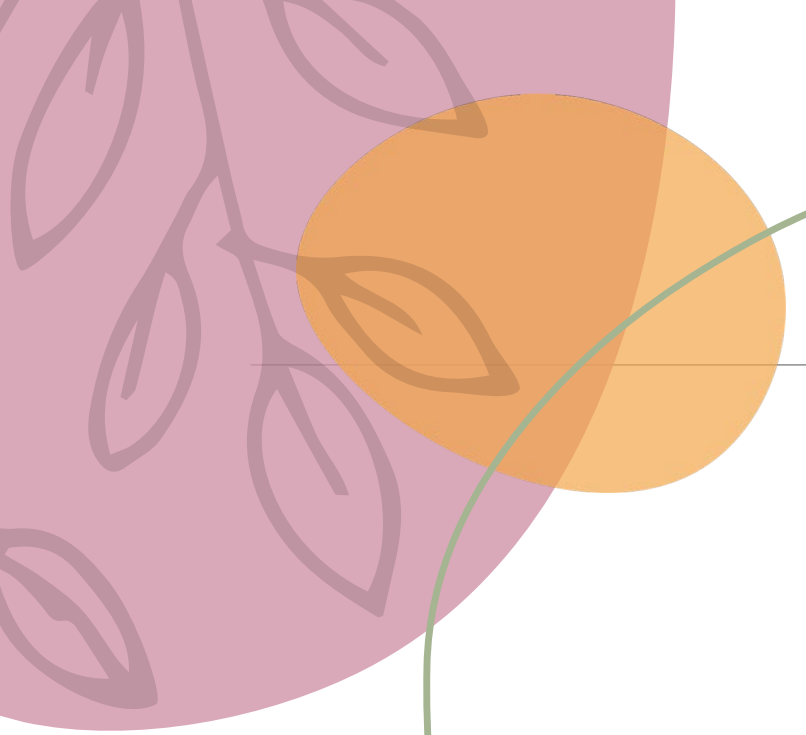


Third Floor Patio



Third Floor Patio





4th Floor Patio





4th Floor South Deck



The Front Range of the Rocky Mountains





thank you

JENN SIDES

JSIDES@COLORADOCOLLEGE.EDU

COLORADO COLLEGE